

recreational

IceSkating

Fall 2011



SPECIAL
ISSUE:

2012 National Events Preview
Discover the Faces of ISI



Worlds Report
& Gallery

2012
Rule Revisions



Hit the ice looking oh-so-fab!

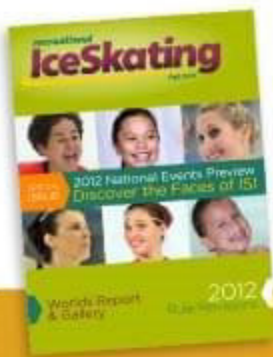
FREE PACKING POUCH SET!

Our gift to you with any purchase of \$135 or more from the Sports Collection. Redeem this offer by visiting zuca.com. USE CODE: ISIFALL NOW THRU 11/15/11

Please add "Packing Pouch Set" to cart before checkout. One gift per customer please, while supplies last.



*Free Packing Pouch Set (a \$50 value)



what's inside

2012 National Event "Faces of ISI"
 (See special section starting on page 13)
 ActionPhotos.com

Recreational Ice Skating | Fall 2011/Vol. 35, Number 4

► features

Publisher
Ice Skating Institute

Editor
Lori Fairchild

Editorial Advisors
Peter Martell
Randy Winship
Sean Flynn

**Print Production &
Advertising/Sponsorship
Manager**
Carol Jackson

Graphic Designer
Dallas Drotz

Recreational Ice Skating ISSN 0164-4106 (USPS 361-570) is published quarterly; Fall, Winter, Spring, and Summer; by the Ice Skating Institute, 6000 Custer Rd., Bldg. 9, Plano, TX 75023. Annual subscription rate is \$12.00 per year. Periodicals postage paid at Plano, TX, and at additional mailing offices. POSTMASTER: Send address changes to Recreational Ice Skating, 6000 Custer Rd., Bldg. 9, Plano, TX 75023. Printed in the U.S.A.

Address subscription requests to Recreational Ice Skating, 6000 Custer Rd., Bldg. 9, Plano, TX 75023. Extra copies are \$4.00 each (includes postage).

©2011 by the Ice Skating Institute. Reproduction in whole or in part is prohibited unless expressly authorized in writing by publisher. All rights reserved. Opinions expressed by contributors do not necessarily represent the views of the Ice Skating Institute, the publisher or the advertisers. Submissions of manuscripts, materials, photographs, and artwork are made at mailer's risk and must include self-addressed envelope with sufficient postage for return. No responsibility will be assumed for unsolicited materials. ISI reserves the right to edit material submitted for content and space consideration.



2011 Worlds Report & Results..... 6

Worlds Photo Gallery..... 10

**2012 National Event Preview:
Faces of ISI..... 13**



**Benefit on Ice Show:
A Star Is Born Every Minute!
..... 21**

2012 Rule Revisions..... 26



► departments

News & Notes..... 4

Competitors' Corner..... 20

**weSKATE Kids Adventures
& Activities..... 28**

Calendar..... 30



Dedicated to providing leadership,
education and services to the
ice skating industry.

ICE SKATING INSTITUTE
6000 Custer Rd., Bldg. 9
Plano, TX 75023
Phone: (972) 735-8800
Fax: (972) 735-8815
e-mail: isi@skateisi.org
www.skateisi.org

ISI INTERNATIONAL
HEADQUARTERS

Executive Director

Peter Martell

Director of Skating

Programs & Events

Randy Winship

Director of Management

Programs & Services

Sean Flynn

Controller

Donna Crooks

Assistant Controller

Elizabeth Kibat

Membership Coordinator

Mary Ann Mangano

**Print Production & Advertising/
Sponsorship Manager**

Carol Jackson

Information Services Coordinator

Jeff Anderson

Administrative Assistant

Angela Taoley

ISI OFFICERS

President	Jim Hartnett
1st Vice President	Mike Palkin
2nd Vice President	Janice Forbes
Treasurer	Rob McBride
Secretary	Margy Bennett
Immediate Past President	Jim Lange

DIRECTORS

District 1	Tiesha Potvin-Coale
District 2	Robin Bentley
District 3	Lisa Fedick
District 4	Christine Wilson Brinton
District 5	Larry LaBorde
District 6	Jodi Truel
District 7	Jamie Baringer
District 8	Susan D'Aquila
District 9	Heather Hyatt
District 10	Jane Schaber
District 11	Caroline Baker
District 12	Debbie Lane
District 13	Allison Miller
District 14	Paige Scott
District 15	Richard Wise
District 16	Cindy Solberg
District 18	Glyn Jones
Builders & Suppliers	Doug Peters
Instructors	Shane Douglas
Commercial Facilities	Liz Mangelsdorf
Public/Not-for-Profit Facilities	Sara Bolan
Schools/Colleges/ Universities	Alane Swiderski
IAM Chair	Kevin McCormack
PSA Representative	Gerry Lane
USFSA Representative	Homer Hagedorn
ISI/Asia Representative	Paul Wong
AMMA Representative	Trudy Ivory
MIAMA Representative	Dean Mulso
MIRMA Representative	Judy Sniffen
Education Foundation	Dan Bartelson
Lifetime Honorary Member	Carol Zdziebko

news & notes

What's going on at your home ice arena, or with your skating club or team?
Send your news and notes to editor@skateisi.org.

Boast Your Badges!

Displaying your ISI test badges is a great way to track your skating progress and wear it proudly. ISI members and their parents are known for their creativity, and their badge displays are no exception. Here are some of the ways they are showing off their growing collections.



Jada Bowers displays her Tot 1-4 badges on the unicorn stuffed animal that she received as a good-luck charm for her first competition. The legs of the unicorn work perfectly for the badges, and when she reaches Pre-Alpha through Delta, the badges will be placed along the sides as a saddle and on the neck. Her unicorn's fabric harness works perfectly for her favorite pins.



Kat Bugarin displays her badges on a fleece throw that she takes to competitions to protect her costume from the benches and keep her warm while she's waiting for her event. Her mother sews her test badges onto the throw in a solid group with the edges aligned, and her competition patches in another, looser, grouping.



Rachael Lund is proud of the badge banner that her mom created. She takes it with her to competitions, where her mother, Corrine, accepts custom orders from skaters and clubs.



Alley Bugarin uses her Zuca bag to show off her ISI achievements and experiences. Rather than stitching directly to the Zuca insert, her mother made fabric "banners" as backdrops for her collection. Her ISI badges are on the banner that ties to the handle and dangles over the front, and her competition patches are sewn on the banner that slips under the handle and drapes over both sides. Alley's Zuca bag is a personalized one-of-a-kind!

WANTED: ISI Event Reporters

If you've always wanted to see your work — and your name — in print, here's your chance! ISI members (and their friends and family, too) are invited to submit their reports, observations and photos from ISI local, regional and national events, year-round. Tell our readers all about your experience at the event, what you saw and heard, highlights, behind-the-scenes stories, inspirations, what made the event different or special — anything you want to report, and the more detail, the better! We'll feature the best reports in this magazine and on our website throughout the year. This will be an ongoing editorial department. Send your event reports and photos to editor@skateisi.org.



Read Your ISI Magazine Online!

In addition to the magazine you receive each quarter in your mailbox, *Recreational Ice Skating* is now available in digital format. If we have your email address in our database, you will receive a link when the magazine is available for online viewing. The digital magazine, which includes links to advertiser websites and many other convenient features, is also available on the ISI website following the print mailing.



Skyler Bowers Wins ISI American Girl Outfit

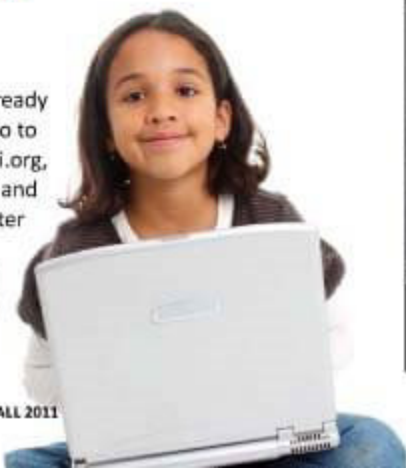
Skyler Bowers of Wasilla, Alaska was the lucky winner of the Facebook promotion featuring a commemorative ISI Conference Championships American Girl outfit. The ensemble was created by SkateCraft, which offers personalized skating jewelry, American Girl doll outfits, skating apparel, blankets, bags, water bottles and other specialty items. Skyler is pictured with her doll, Mia.

Background Checks Mandatory for ISI Professional Members

Effective Sept. 1, annual background checks are required for all ISI professional members. This new requirement is another example of the Ice Skating Institute's commitment to the safety and security of all of its members.

Looking for a Skating Pen Pal?

The ISI Pen Pal program is ready for your requests! Simply go to the skaters' page at skateisi.org, click on the Pen Pal button and complete the form to register and select pen pals. You MUST include your ISI member number to verify membership and identity.



Make Your Own Ice Rink with **NICE RINK**

*A pristine sheet
of ice
that's all yours.*

*Everything you need
to make your own!*

- NiceRink® Bracket sideboard support system
- Ultra strong NiceRink® liners
- NiceRink® plastic boards
- Outdoor rink resurfacers

*NiceRink®
plastic boards
& brackets*

888-NiceRink (642-3746)

Any size – details online at www.NiceRink.com/isi



Minnesota Medals & Memories

The 2011 ISI World Recreational Team Championship trophy went to host team NSC Schwan Super Rink, earning 1233.5 team points in the world's largest annual recreational ice skating competition.

While the Schwan team members were ecstatic over their achievement, none of this year's 1,107 competitors went home without medals and memories. Skaters ages 2 to 77 representing 84 rink teams from 23 states as well as China and the Philippines, participated in the six-day competition in Blaine, Minn. Nearby White Bear Lake Sports Center brought the largest team, with 114 skaters.

Next year's Worlds competition is set for July 23-28 in Dallas! See ya'll in Big D!



Three was the key for Synchro Parache at this year's Worlds. All three of the Parache teams from the Minnesota/Augsburg Arena took first.

TOP 10

PLACE	TEAM	TOTAL POINTS
1	NSC Schwan Super Rink (MN)	1233.5
2	Blue Mound Figure Skaters (MN)	968.0
3	White Bear Lake Sports Center (MN)	844.5
4	SportQuest Skating Academy (MN)	748.5
5	Skating Club of Greater Youngstown (OH)	733.0
6	Sioux Falls Figure Skating Club (SD)	683.5
7	Norwich Skating School (CT)	633.5
8	Capitol Ice Academy (IA)	612.0
9	Tampa Bay Skating Academy Countryside (FL)	490.0
10	Stars of Austin Figure Skating Club (TX)	453.5

For complete list of teams and results, go to skateisi.org/worlds_results.

Special thanks to 2011
ISI Worlds Presenting Sponsor



Continued »

Simply a **Better Blade**



**Eclipse
Infinity**
MSRP \$325

Try Eclipse Blades™ for a stellar skating experience.

In 7 of 10 key measures, only Eclipse Blades offer these important features to help you succeed. We're so confident our new blades will eclipse expectations, they're backed by a 60-day, no-questions-asked full refund guarantee.

Eclipse is not only beautiful, it is **simply a better blade**.



**John Wilson
Pattern 99**
MSRP \$429



**Ultima
Elite UB105**
MSRP \$379.95



**Paramount
Freestyle 440SS**
MSRP \$559



Features Comparison*

	Eclipse Blades Infinity	John Wilson Pattern 99	Ultima Elite UB105	Paramount Freestyle 440SS
Heat Tempered	★	•	•	
Full Silver Welds	★	•	•	
Right & Left Sole Plates	★	•		•
Computer Controlled Chrome Relief	★			
Chrome-Free Toe Picks	★			
Mirror Finish Chrome Plating	★			
Foam Packaging & Polishing Cloth	★			
Designed for Custom R.O.H.	★			
Made in North America	★			
60-day no-questions-asked full refund guarantee	★			

ECLIPSE
BLADES™

EclipseBlades.com

Visit your Authorized Riedell Dealer
to experience Eclipse.



» *Worlds Memories continued*



I had absolutely the best time at ISI Worlds 2011. I was actually the only one there from my rink, but it was OK because I made so many new friends and just had so much fun competing and being in the atmosphere of what I enjoy most — skating! I have participated in two other national events before, and there is just a sort of wondrous spirit that can't be broken there, where you're just there to have the time of your life and enjoy every second of it. I am so happy I became an ISI member and competed at this World Championships. It really changes your whole world in magical ways you never would have thought.

Marie Feely
St. Peters, Mo.



I loved Worlds because my family was involved. I skated with my dad and helped play music while my mom did announcing!

Rachel Kraber
Blaine, Minn.

My first Worlds experience was unbelievable! I enjoyed watching and cheering the friends I have met throughout the years. I also enjoyed trading my pins, and meeting people from around the world. The opening ceremony was amazing. I've never seen so many balloons in the air before. The lesson I had with Ryan Bradley was outstanding. He is such an amazing guy, and his personality is just so incredible. The show he put on was ... WOW! He did back flips on the ice! All I can say is I have a new idol. The Schwan Super Rink was fantastic. It was easy to find the rinks you were suppose to be on and the coaches/volunteers were tremendous! I want to thank everyone who made 2011 ISI Worlds possible. See you in Dallas!

Haley Patrick
Brookings, S.D.



This year's Worlds competition in Blaine, Minn. was fantastic. Our family spent the week vacationing in the area. We went to Valleyfair Amusement Park, the Como Zoo and the Mall of America. We participated in the opening ceremony wearing our blue Franklin Park Fusion T-shirts. ISI threw a great competitors' party at the Brunswick Zone XL. On Friday, our rink skated in a production number, "Welcome to the Jungle." Trading pins was another highlight since it is a great way to meet skaters from across the country. We are looking forward to Dallas in 2012.

Andrea & Anthony Caruso
North Riverside, Ill.



The ISI Worlds volunteers were the most pleasant bunch of people. I had a great time and a Great Skate! I also met a lot of very nice people.

Sandie Baker
Oxford, Ohio



I had an awesome time in Minnesota and can't wait for Dallas next year! I enjoyed the sculpture garden in downtown Minneapolis, going to Lake Calhoun and meeting SpongeBob at the Mall of America. Thanks again for a great time!

Dani Gaiser
Danbury, Conn.

The ISI Worlds competition was eye-opening. At first, I wasn't nervous at all. Then I saw the non-Special Olympics teams. That spooked me. My team couldn't compare. When I was getting ready to skate, I shoved those thoughts out of my head, for the most part, and focused on doing my best. But when we got on the ice, I was breathing so fast I'm surprised I didn't faint.

The Silver Edges is the only Special Olympics synchronized skating line in the world, so we can't just go find a team close to home. We have members that drive or get a ride up to 45 minutes away. We only meet once or twice a month.

The amount I have learned from being on the team is enormous. We have a good time on and off the ice, and learn from each other. That is why I'm a part of the team.



Elizabeth Chandler
Plymouth, Minn.



My name is Peyton Wiewel and this was my fourth ISI Worlds competition! I am 9 years old and I have traveled from Parkville, Mo. to Denver, San Jose, Boston and now Blaine, Minn. I have made friends over the years that I get to see and compete with. My new friends are from all over the United States, the Philippines and China. I always have so much fun on the ice and off. I look forward to this competition every year!

Peyton Wiewel
Parkville, Mo.

LEARN TO SKATE LIKE A CHAMPION!

Over 50 instructional videos available! • (888) USA - 2014

Skatetape.com

Skatetape.com The Figure Skating Video Superstore

50% off
all VHS tapes*

*restrictions apply





Northbrook Winter **Welcome**

Friday-Sunday | December 9-11 | 7am-9pm

The Northbrook Sports Center invites you to our annual ice skating and hockey team competition.



Back by popular demand!

Championship Interp Events

More than 40 different events!

All levels and ages welcome

Practice your ISI Winter Classic events!

New events, including "Just Dance"

Special lighting during spotlight events!

Hockey players – Compete in four events against your buds

All events are free for spectators!



Registration information is available at nbparks.org after September 9.
Registration deadline is November 4. If you have questions,
contact Heather Aseltine at haseltine@nbparks.org.

Northbrook Sports Center | 1730 Pfingsten Road, Northbrook, IL 60062



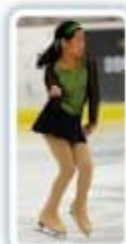


2011 ISI WORLD TEAM

Professional On-Ice Photography by ActionPhotos.com



CHAMPIONSHIPS GALLERY



ISI IS COLLEGE-BOUND!



College students don't have to put ice skating on hold! The ISI Collegiate Skating Program gives students the opportunity to maintain or improve their skills, stay fit, be part of a team and compete in ISI events.

ISI member skaters of all skill levels are welcome. There is no minimum or maximum requirement for team size; even a single skater can represent a school. A Collegiate Championship trophy will be introduced this year at the ISI Adult Championships, Sept. 30-Oct. 2 in Oldsmar, Fla.

"Attending practices is good exercise and a great way to take a break from a hectic college schedule and enjoy the ice."

Elisabeth Pitruzzella,
Alpha-Level Collegiate Skater

"The ISI program is a wonderful vehicle for collegiate teams to explore their talent and experience a stress-free atmosphere."

Monica Malcomson,
Platinum-Level Collegiate Skater

Participation in the ISI Collegiate Skating Program offers all of the opportunities, rewards and — most of all — FUN that ISI skaters have come to know and love!

ISI COLLEGIATE SKATERS:

- Continue to participate in and enjoy a sport they love.
- Become part of a group of new friends who share their love of skating.
- Participate in ISI competitions.
- Stay fit and maintain or improve their skating skills.

For more information, go to skateisi.org/collegiate or contact the ISI office at (972) 735-8800.

2012 ISI National Events Preview

Discover the Faces of ISI!

ISI skaters can be found from coast to coast, and beyond. They're all ages and skill levels, and they have many different interests, talents, lifestyles and goals. But there's something they all share: a love of ice skating.

Meet Carli, Alison, Allie, Kyle, Cheryl and Celide, six faces of ISI who want you to know why participating in ISI recreational skating competitions is the coolest thing on ice!

Get out your 2012 calendar and start planning now for next year's ISI national events!

WINTER CLASSIC
February 17-19



CONFERENCE
CHAMPS
May 26-28



SYNCHRO
March 30-April 1



HOLIDAY
CHALLENGE
November 30-
December 2



WORLDS
July 23-28



ADULT CHAMPS
October 5-7

Make Warm Winter Memories in Chicagoland!

ISI Winter Classic
February 17-19
Northbrook Sports Center
Chicago
Entry & Test Deadline: December 1



"One of my most treasured memories of Winter Classic is the happy, carefree feeling in the air when skaters from across the country share their love of skating and the ice. I love meeting new friends and exploring a new state. Our team went into our last competition as good friends, but we came out as sisters. It feels great at ISI events when you're being cheered on not only by your teammates, but even by other teams and parents. It's also really cool to watch all the different styles of skating. I'm going again next year — hope to see you there!"



Carli Bruckmueller
Eagan, Minnesota



skateisi.org/winterclassic

Team Up for Synchro in the Gateway to the West!

ISI Synchronized Championships

March 30-April 1

St. Peters Rec-Plex

St. Louis

Entry & Test Deadline: February 1



"I will never forget the feeling of stepping onto the ice at ISI Synchronized Championships, knowing that hundreds of other skaters are watching my team. It's a feeling that I've been lucky enough to experience for seven years in a row! Synchro Champs is an entire competition devoted to synchronized skating, including formation, skating and dance teams. The skating teams participate in both initial and final rounds. The diversity of skaters who attend is awesome, and I love to watch them all skate. Team bonding at Synchro Champs is the best, and I always come home excited to start next year's team."



Alison Geniec
St. Louis, Missouri

skateisi.org/synchro

Florida Fun Over Memorial Day Weekend!

ISI Conference Championships
May 26-28
RDV Sportsplex Ice Den
Orlando
Entry & Test Deadline: March 1



"I've been competing in ISI events since I was 5 years old. My favorite thing about the national competitions is making the judges smile. At the Conference Championships in Dallas, I did the moonwalk as part of my made-up interpretive program to a Michael Jackson song, and that actually made the judges laugh! I recommend going to ISI national events because they are super fun, and they help you to be an even better skater because you are competing against skaters from all over the country, so you really want to do your best."



Allie White
Trinity, Florida

skateisi.org/conferencechamps

Scoot Your Boots to Worlds in Texas!



ISI World Recreational
Team Championships
July 23-28
Dr Pepper StarCenters
McKinney & Frisco
Dallas

Entry & Test Deadline: May 1

"I love going to ISI national competitions, especially Worlds, because it gives everyone a chance to skate against great competitors. I love skating and I love meeting new people. I recommend going to Worlds because it is so much fun. I love the Competitors' Party and the Benefit on Ice Show, and the best part is trading pins with people from all over the world. Last year I became friends with a team from the Philippines, and we still stay in touch. Skating at Worlds is an unforgettable experience of a lifetime."

Kyle James
Clearwater, Florida

skateisi.org/worlds



Adult Skaters Love to Live It Up in Vegas!

ISI Adult Championships
October 5-7
Las Vegas Ice Center
Las Vegas

Entry & Test Deadline: August 10



"Through my participation in ISI national events, including Adult Championships, I have enjoyed excitement, challenge and new friendships. Each competition has brought its own special meaning into my life. Just being there is an explosion of fun!

The events are geared to all levels, so each competitor has an equal opportunity to express, improve and be a champion. There is so much support and encouragement among all the competitors toward each other to be all you can be. It's like a big family caring for each other — you're never alone when skating in an ISI competition."

Cheryl Graffi
Pasadena, California

skateisi.org/adultchamps



'Tis the Season for Joyful Skating!



ISI Holiday Challenge*
November 30-December 2
Danbury Ice Arena
Danbury, Conn.

Entry & Test Deadline: October 1

"Every ISI national competition that I skate in is new and challenging. I have so much fun that I sometimes forget it's a competition! I love performing in the different categories, watching and competing with wonderful skaters and making new friends. The national competitions give me the chance to travel to different states. My coach wants me to learn something about each state that we visit, so we go to museums, aquariums, national parks and historical places. Every figure skater should have the opportunity to participate in an ISI national competition — it's a great experience!"

Celide Dymond
Frisco, Colorado

skateisi.org/holidaychallenge

*Replaces Artistic Challenge

ISI National Event Checklist



At least three months before event:

- Go to ISI Web site (skateisi.org) and print out event entry form.
- Pass test(s) for skating level you wish to participate in at event.
- Talk with your coach and decide which events you should enter, and how to enter some extra events that don't require a program routine. (Check out the special discounted events for 2012!)

By entry deadline:

- Make sure your ISI membership has been renewed for the new membership year. If not, your membership renewal fee can be included on your event entry form.
- Make sure your highest tests are registered.
- Send in completed entry form.
- Make travel plans, including hotel reservations at an ISI host hotel, listed on the ISI Web site.

Two months before event:

- Make or purchase costumes.
- Make props for Spotlight events.
- Learn new routines.

Week before event:

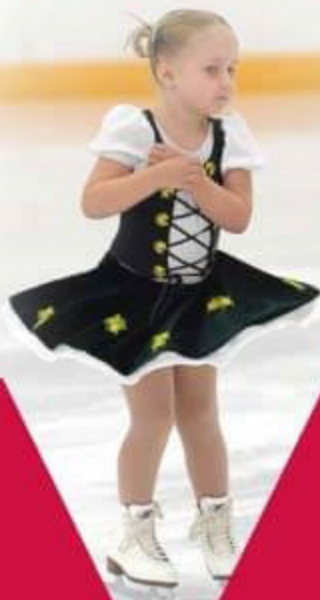
- All national event music must be on CD only (no CD RW). Make sure you have one program per CD, and always make a back-up copy, too.
- Polish skates.

During event:

- Smile!
- Skate your best.
- Practice ISI sportsmanship.
- Meet new friends, trade pins and contact information, etc.
- Have FUN!

A Star Is Born Every Minute!

by Lisa Fedick



Four-year-old Amelia Flanagan performed her Pre-Alpha program like an old pro.

Photography by ActionPhotos.com

The ISIA Education Foundation Benefit on Ice Show always provides some of the most exciting moments and memories of the Worlds competition week. Robyn Bentley and her team of undercover talent scouts did a fabulous job of selecting skaters who highlight the diversity that is the Ice Skating Institute. The evening's performers represented 11 states and 22 ISI member facilities.

Four-year-old Pre-Alpha skater Amelia Flanagan of Pflugerville, Texas, performed like an old pro, while adults Greg Ferrare, Dawn Crowder-Dudley, Burton Powley and the ageless Donelda Horne made it clear that age truly is just a number.

Talent was abundant at every level. After passing a nearly flawless Freestyle 10 test program earlier in the week, ISI veteran and U.S. National Junior Men's competitor Daniel Kulenkamp of White Bear Lake, Minn., seized the opportunity to appear on the same bill as his idol, Ryan Bradley.

ISI newcomer Kiri Baga from Bloomington, Minn. performed a Platinum Freestyle program, which left no doubt as to how she earned the title of »



ICE SKATING WITHOUT THE ICE

Can be used on any smooth surface indoors or out

Behaves like an ice skate blade



THE PIC SKATE - The most responsive inline skate EVER!

www.picskate.com

Wipe2Perform

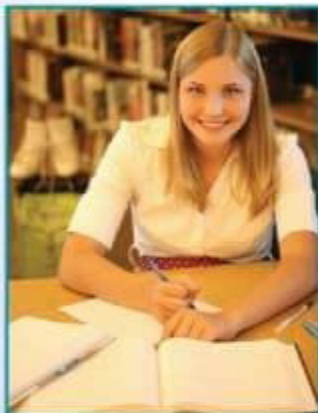
Complete Blade Cleaning and Protection



Patented Technology
Keep Blades Sharper Longer
Keep Blades from Rusting
Boost Confidence on Ice
Keep Money in Your Wallet

www.wipe2perform.com

Are You a Skating Scholar?



Emily Miller, 2008 scholarship recipient

ISI members are well-rounded individuals who put as much energy into their life off the ice as they do on it. We believe that both educational and recreational pursuits are necessary to achieve a balanced life.

Each year, the ISIA Education Foundation awards scholarships to ISI skaters who have demonstrated a commitment to academics and service. The application process is open to students in their senior year of high school through

their junior year in an undergraduate program. However, most recipients began their qualification process during their middle-school years. Start your four-step process of qualification today!

- 1** Maintain at least a 3.0 GPA.
- 2** Participate in a variety of school and community activities. Keep detailed records, including frequency of participation.
- 3** Continue to test and compete in the ISI program, especially during the two years prior to application. Keep good records of all skating activity.
- 4** Prior to application, complete 120 hours of verified service, of which at least 60 must be in association with an ISI member facility. This information must be recorded on the Service Hours Verification Form, which is part of the scholarship application available at skateisi.org.

**Application deadline is
March 1**

For more information or to apply, go to skateisi.org or call (972) 735-8800



The Smith family, whose children are from four different countries, performed a Family Spotlight routine, with only about a year's experience on the ice.

» 2009 U.S. Novice Ladies Champion. Congratulations to the two lucky Skate with the Stars raffle winners, Dana Ginsberg of Park Ridge, Ill. and Carrie Paris of Elmira, N.Y.

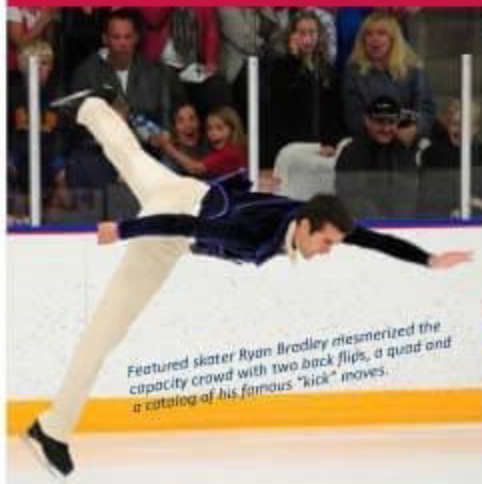
Found behind the great skating are always some inspiring stories. Jan and Joe Smith from Orlando, Fla., and their four children

performed a Family Spotlight routine, after having started skating only about a year ago. All four of the Smith siblings are adopted from different countries: Lexi from Cambodia, Lynzie from Vietnam, Josh from Korea and Jake from the United States.

The Silver Edges Special Skater Formation Team from Plymouth, Minn., as well as the Special Skater Dramatic Spotlight program by Robert Johnson of Elk Grove Village, Ill., demonstrated the ISI philosophy that recreational ice skating is a sport and a source of joy for individuals of all abilities.

All proceeds from the Benefit on Ice Show go into the endowment of the ISIA Education Foundation annual scholarship awards. This year's scholarship recipients, Melissa Felps of St. Peters, Mo. and Melanie McDonough of Downingtown, Pa., performed in the show and were honored in a special recognition ceremony. (Watch for profiles of Melissa and Melanie in the next issue.)

And, of course, there was our guest skater. After conducting four sold-out skater clinics earlier



Featured skater Ryan Bradley mesmerized the capacity crowd with two back flips, a quad and a catalog of his famous "kick" moves.

In the day, U.S. National champion Ryan Bradley mesmerized the capacity crowd at the Fogerty Arena with two back flips, a quad and a catalog of his famous "kick" moves.

Ryan's performance philosophy is: "There is no such thing as an exhibition. I must challenge myself in every performance and not allow myself or my audience to get bored." Indeed, boredom was not even remotely possible, thanks to his signature moves combined with his engaging personality.

Ryan's world premiere performance of Aerosmith's timeless "Dream On" was the highlight of the evening for many members of the transgenerational audience.

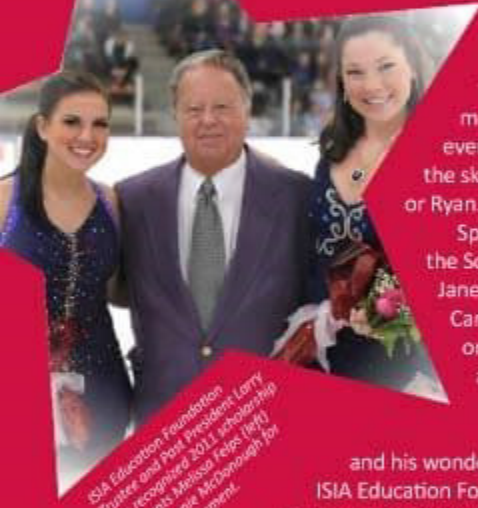
After the show, like a true ambassador of our sport, Ryan was transformed into Mr. Meet-and-Greet Extraordinaire, graciously fulfilling each and every autograph request.

"The ISI offers such a great program, which over the years has given so many elite skaters their start," he said. "I was really excited to be in Minneapolis and to be able to show my support of this great event."

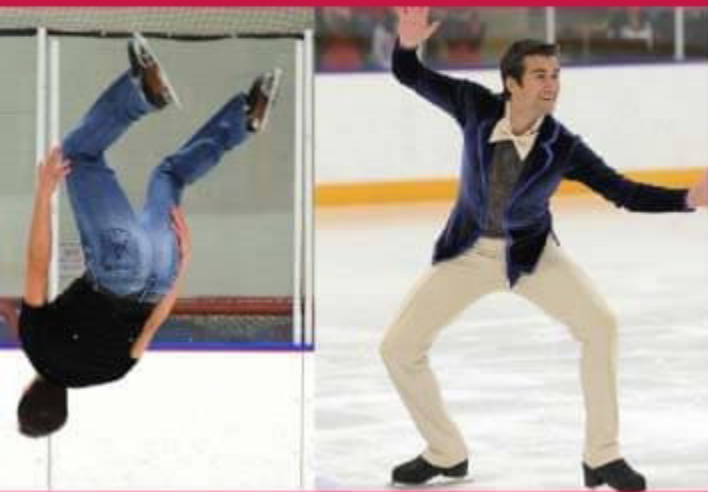
It would be difficult to say for sure who had more fun that Friday evening in Minnesota — the skaters, the audience or Ryan.

Special thanks go to the Schwan Super Rink's Jane Schaber, Pete Carlson and their local organizing committee and tireless volunteers; Fogerty Arena's Mark Clasen

and his wonderful staff; and the ISIA Education Foundation and Robyn Bentley, who make dreams come true both on and off the ice. **RIS**

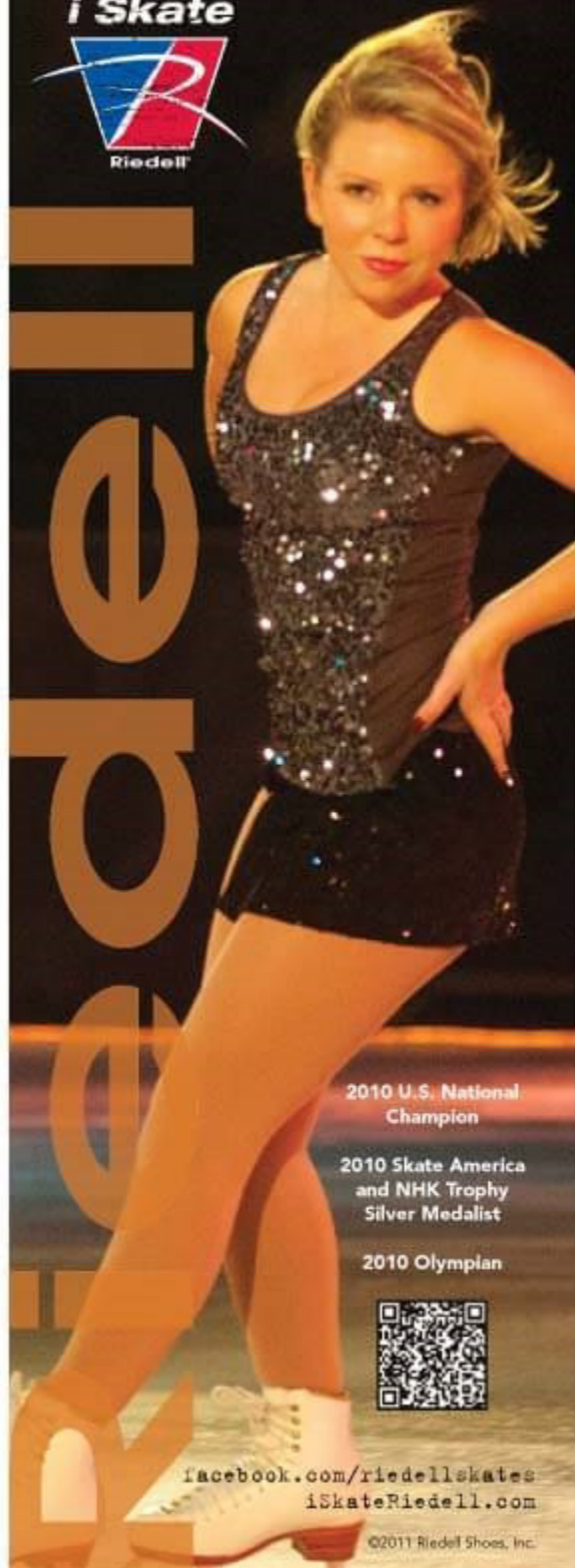


ISIA Education Foundation Trustee and Past President Larry Pitt recognized 2011 scholarship recipients Melissa Felton (left) and Marianne Michenerough for their achievement.



Rachael Platt

i Skate



2010 U.S. National Champion

2010 Skate America and NHK Trophy Silver Medalist

2010 Olympian



facebook.com/riedellskates
iSkateRiedell.com

©2011 Riedell Shoes, Inc.



competitors' corner

BY RANDY WINSHIP | ISF Director of Skating Programs & Events

Change is in the Air

Fall is always a time of change, whether it's schools coming back to life, trading the summer heat for crisp autumn air or starting to think about all the upcoming ISI skating competitions across the country.

We're also getting ready for 2012, a "change year" for ISI test and competition rules. It's very important that you and your coach make sure your programs fit the current requirements. The best way to have all the details at your fingertip is by ordering your own copy of the new *2012 ISI Handbook* that will be available in December.

The 2012 rule revisions are listed on pages 26-27 of this issue and are mandatory for all ISI competitions after Jan. 1, 2012. Competitions between Sept. 1 and Dec. 31, 2011 have the option of using the current 2010 rules or using the new 2012 rule revisions (the 2010 and 2012 rules may not be mixed — it must be one or the other). ***If you are planning to attend an event between Sept. 1 and Dec. 31, be sure to check with the competition director to find out which rules will be used.***

Here are some other highlights that might affect you and your programs:

- » **Synchronized Skating** – There are some significant changes and a couple of important clarifications for ISI synchronized team events. All synchronized skating rules and age divisions are **effective beginning Sept. 1.**
- » **Open Freestyle** – Skaters can now perform any spin at any level, but the current jump limitations remain in effect for the Bronze, Silver and Gold levels.
- » **Dance Events** – If the skater has passed the individual dance test, they can compete that dance in a competition event. They no longer must complete the entire dance test before skating a higher-level dance.
- » **Rhythmic Skating Ribbon & Hoop** – If you have more than one ribbon streamer or have any fringe decoration, etc., on your hoop, that program should be entered in the Spotlight Light Entertainment category and not in the Rhythmic Skating events.
- » **Theatre on Ice** – This is a new event similar to Production Team, but the program normally tells a story and incorporates advanced skating ability levels.

SP-Teri



ZERO GRAVITY LICENSE TO FLY

The latest light weight skating boots.

Standard Features:

- V notch for optimal ankle flex.
- Low cut back for ideal toe pointing and better Achilles comfort.
- Cushioned insole for shock absorption with anti friction top cover.
- Suede synthetic lining to wick moisture from feet and ankle comfort.

Available at a SP-Teri dealer near you.

SP-Teri Co., Inc. 436 North Canal Street, Unit 1 • South San Francisco, CA 94080
Phone (650) 871-1715 • Fax (650) 871-9062 • www.spteri.com

» **Open Pair Tests and Events** – These are similar to the Open Freestyle tests and events. Read all the details in the new 2012 *ISI Handbook*.

» **Collegiate Team Trophy** – This year, for the first time, a Collegiate Team Trophy will be presented at the Adult Championships event, along with the traditional Erika Amundsen Trophy that is awarded to the Adult team champions.

» **ISI National Events** – Also in this issue, you will find our “Faces of ISI” 2012 national event preview featuring skaters who have personal testimonials about their involvement in our recent ISI national events. Events are planned across the country, so check the calendar and make your plans to attend a national event in your area, or choose one where you can combine your love of skating and a family vacation destination!

» **New Holiday Challenge Event in 2012** – Same time, different place, different competition events! Previously known as Artistic Challenge, our December national event is changing next year to the ISI Holiday Challenge. While the Artistic Challenge focused on purely creative and artistic events, many skaters and coaches have asked that we also include technical events in that competition. So the name change to Holiday Challenge also means that the competition will feature ALL of the ISI competition events traditionally offered at Winter Classic, Conference Champs, World Team Champs and Adult Champs.

As always, ISI’s new changes and revisions have been created to offer even more skaters the opportunity to participate in our recreational skating programs and events. Grab your skates, get on the ice and enjoy the fun and challenges that we have in store for you in 2012! *ISI*

High-Level Tests

Congratulations to the following ISI skaters who have recently passed high-level tests:

FREESTYLE 10

Daniel Kulenkamp

White Bear Lake Sports Center (MN)

FREESTYLE 9

Xinghua Turner

Harry J. McDonald Memorial Center (AK)

FREESTYLE 8

Cassandra Cole

Nashoba Valley Olympia (MA)

Meena Khayami

Nashoba Valley Olympia (MA)

Kristen LaHaise

Nashoba Valley Olympia (MA)

DANCE 8

Hannah Foust

Ice Chalet (TN)

MOLDED ELBOW PROTECTOR

Ultra Crash Molded Elbow protectors provide the same unsurpassed fall protection as our unique Ultra Crash gel knee, hip and spine pads with literally no flexibility issues.



Item # HP 4015 & HP 4016

Skating Safe, Inc.

The Elbow Protector is sold as a unit with our retention sleeve. To wear the pad, simply place the pad inside the sleeve and pull over the elbow holding the pad and sleeve tightly. Then reposition the pad as needed.

Only \$14.75 more than the original!

Skating Safe, Inc.
www.SKATINGSAFE.com
(888) 299 - 2553

2012 ISI TEST & COMPETITION RULE REVISIONS

The following 2012 synchronized competition revisions are mandatory for all competitions after September 1, 2011. Competition directors should inform all participants and judges before their event.

1 Synchronized Competition Event Revisions and Clarifications

- Synchronized Skating Teams in both the **Teen and Senior Youth age divisions** can now perform any spin(s).
- Synchronized Formation Teams **can perform 2-foot spins in any age division.**
- Synchronized team skaters are now limited to compete at **one age division lower or higher than their true age division** (for example, a 10-year old Youth team skater can skate on a Jr. Youth and/or Sr. Youth team, but not on a Teen team). All age divisions still require a **MAJORITY** of skaters — but not every skater — to fit within the age division for that team.

2 New Synchronized Events

- **NEW! Synchronized Skating Open Competition Event:** This event for Sr. Youth, Teen, Collegiate and Adult age divisions only will consist of a 4-minute program with no required elements. The program restrictions for traditional skating team events must be followed. The judging criteria will be: Technical Merit, Correctness, Choreography & Pattern, Music Interpretation, Unison, Duration and General Overall.
- **NEW! Advanced Formation Synchronized Event:** This new team category for skaters who are continuing to master the basics of good synchronized skating such as straight lines, correct holds and unison. The program must include at least one of each of the following basic elements:

Line, Circle, Block, Wheel and Intersection. Skaters are permitted to skate backwards on one foot but are limited to using only 3-turns and Mohawks for turning and in footwork sequences.

- **NEW! Collegiate Age Group for Synchronized Teams:** The majority of skaters must be ages 18-25, and the team members must be affiliated with the college/university that they are representing.

The following 2012 test and competition revisions are optional for ISI competitions from Sept. 1, 2011 and mandatory for all events after Jan. 1, 2012. Competition directors must inform all participants and judges if they will follow these new revisions for competition events from Sept. 1 through Dec. 31, 2011.

3 Competition Event Revisions and Clarifications

- **Open Freestyle Events:** Skaters can now perform **any spin at any level.** The current jump limitations remain in effect for the Bronze, Silver and Gold levels. The Open Freestyle test maneuver choices remain the same.
- **Competition Dance Events:** As long as the skater has passed the individual ISI dance test, **they can compete that dance in competition events** (i.e. Solo, Similar, Mixed or Pro Partner). The skater is **no longer required to complete all dances** in the higher dance test level to compete any dance(s) at that higher level.
- **Rhythmic Skating Ribbon and Hoop Prop Clarification:** The ribbon streamer must be **one single streamer** piece (not multiple streamers) according to the prop guidelines in the *ISI Handbook*. The hoop can have colored tape or fabric to match the skater's costume, but it **cannot have any other decoration** (i.e. fringe, etc.) on the prop.

If multiple ribbon streamers or fringe is used on the hoop, those programs should be entered into the Spotlight Light Entertainment category and not in the Rhythmic Skating events.

4 Judging Revisions and Clarifications

- **Solo Compulsory Events Judging Criteria:** *The General Overall criteria will be added to the Judge 1 (Referee) sheet only.* Any penalties such as the 2.0 score for attempting illegal maneuvers or taking two attempts at the required maneuvers will be assessed by Judge 1 (Referee).
- **Open Freestyle Events Judging Criteria:** The current *Correctness* criteria on the Judge 1 (Referee) sheet will be changed to *Correctness of Jumps*. The new criteria for Judge 2 will be *Correctness of Spins*. The new criteria for Judge 3 will be *Correctness of Turns and Edges*. As a reminder, *difficulty of maneuvers is not considered under any Correctness score* – only the technical accuracy of the maneuvers performed will be comparatively judged.

5 Created Events and New Events

- **Created Events for Local or District Competitions** (events not defined in the *ISI Handbook*): Any created event requiring a technical (freestyle-type) program must be approved by the Test & Competition Standards Committee prior to being offered at any local or district competition. **New created event submissions must be made by April 1** for consideration at the annual committee meeting in May.

Created events that do not require a technical program (i.e. longest spin, shoot-the-duck or spiral, etc.) must be submitted with the competition endorsement application for approval **at least 90 days prior to the event date** – and prior to any announcement or publication of the created event(s).

- **NEW! Theatre Production Event:** This category is for your entire skating team. Skaters of all ages and advanced ability level can participate in this new theatrical team event. This is a creative, artistic program based on story or theme, using costumes, props and technical skating to enhance the performance quality. Program length is 6:30; however, there is no penalty for shorter program times.

- **NEW! Open Pair Tests and Events:** Please refer to the new *2012 ISI Handbook* for complete test requirements and descriptions.

Bronze Pair Test and Competition Event

Requirements: Any two jumps, spins and lifts from Pair 1-3 test levels; one arabesque or undercut spiral; a sequence of crossovers and/or cutbacks. Program length: 2 minutes.

Silver Pair Test and Competition Event Requirements:

Any two jumps and spins, from Pair 4-5 test levels; one pair spiral; two lifts from Pair 5; the dance step sequence from Pair 5 or a sequence of your own design. Program length: 3:00.

Gold Pair Test and Competition Event Requirements:

Any two jumps and spins from Pair 5-6 test levels; one spiral or death spiral from any level; two lifts from Pair 6 or below; the dance step sequence from Pair 5 or 6 or a sequence of your own design. Program length: 3:00.

Platinum Pair Test and Competition Event

Requirements: Any two jumps, jump combinations or throws; any two spins and two lifts from Pair 7-10 levels; a spiral sequence of the skaters own design; the dance step sequence from Pair 7-10 test levels or a sequence of your own design. Program length: 4:30.

- **NEW! Adult Champs Trophies:** Both the Erika Amundsen Trophy (awarded to the overall Adult Team Champions) and the **new Collegiate Champion Trophy** will be presented at the annual ISI Adult Championships event.

For more information and complete details about any rule revision, please refer to the new 2012 edition of the ISI Handbook, available in December.



It's back-to-school time!

To solve this puzzle, read the clue and find the correct letter to put on each line. The letters, in order, will spell out the name of a popular Freestyle 5 spin.

- _____ The first letter is in ICE and CUBE but not in RINK.
- _____ The next letter is in SKATE and BLADE but not in JUMP.
- _____ The third letter is in MOM and MINE but not in DAD.
- _____ The next letter is in HOCKEY and GLIDE but not in PUCK.
- _____ The last letter is in FLIP and LOOP but not in SPIN.

BE SILLY WITH A SALCHOW!

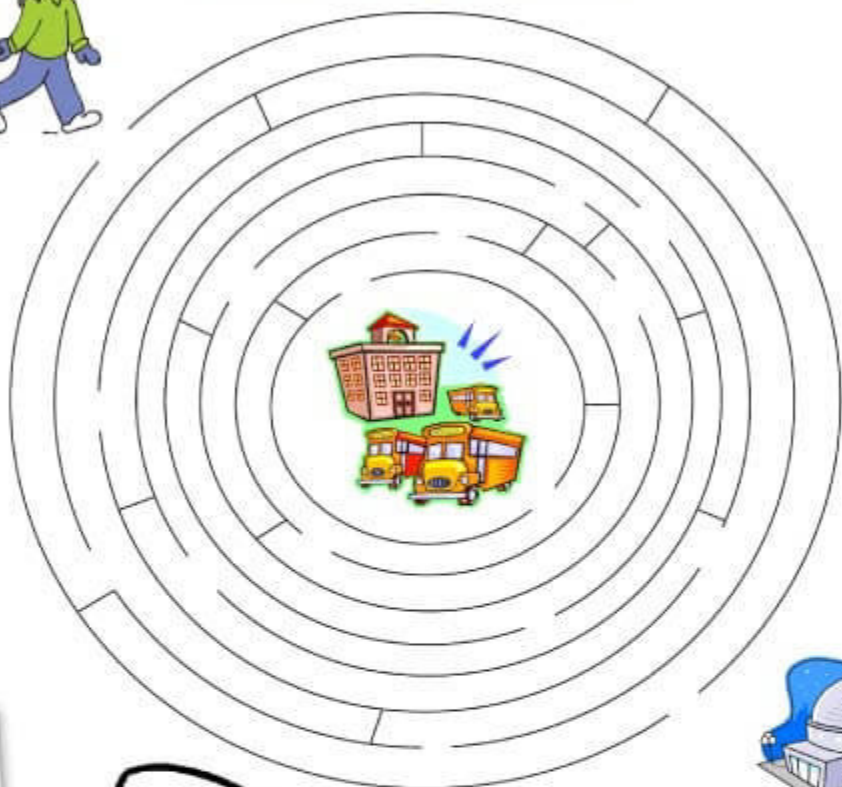
The Salchow (pronounced sow-cow) is a figure skating jump, invented by the Swedish skater Ulrich Salchow in 1909. The single Salchow is one full revolution and a required move of Freestyle 3, while a double Salchow is on the Freestyle 6 test. A triple Salchow is performed at the Freestyle 10 level.

Fill in each box below with a word that begins with the letter at the left and also fits the category at the top. The first line is done for you. But there can be several correct answers!

	A GIRL'S NAME	A BOY'S NAME	A U.S. STATE	AN ANIMAL OR REPTILE
S	<i>Susan</i>	<i>Steven</i>	<i>South Dakota</i>	<i>Snake</i>
A				
L				
C				
H				
O				
W				

Practice Can Be Fun!

Like so many skaters, Lizzie must go to school each day before going to the ice rink to practice. Can you help her find her way to both places today?



She's a Word Wiz!

Congratulations to **Natasha Renee Luszc** for finding the most words in "Ice Skating Institute" one of last issue's *weSKATE Adventures & Activities!*

Color Me!



Classified Advertising

Skaters, think birthdays and Christmas!

The Champion Behind the Champion, an award-winning book, PLUS the adorable plush book character, LambieAnn, 10" (\$34+SH) or 14" (\$39+SH). Holiday greeting cards also available. www.BarbarAnn.com or (404) 546-9152



To place classified advertising, call Carol Jackson, advertising sales manager, at (972) 735-8800, fax to (972) 735-8815 or send e-mail to cjackson@skateisi.org.

competitions

september

16-18 **Arlington TX**
ICE at The Parks
7th Annual Open Competition



30-Oct. 2 **Oldsmar FL**
Tampa Bay Skating Academy-Oldsmar ISI Adult Championships

17-18 **Valencia CA**
Ice Station Valencia
11th Annual Autumn Classic
24 **Lewis Center OH**
Chiller North-Lewis Center
Chiller Classic

october

7-9 **Brookings SD**
Larson Ice Center
Brookings Figure Skating Club
Brookings Prairie Classic

8 **Roseville CA**
Skatetown
Octoberfest

14-15 **Clearwater FL**
Tampa Bay Skating Academy
TBSA Countryside ISI Fall Competition

22 **Irmo SC**
Plex Indoor Sports & Ice
Palmetto Skate Club
Palmetto Classic

22-23 **Aliso Viejo CA**
Aliso Viejo Ice Palace
16th Annual ISI Open Competition

28-29 **Woodbury MN**
Bielenberg Sports Center
Skate Woodbury ISI Classic 2011

29 **Simi Valley CA**
Iceoplex Simi Valley
9th Annual ISI Open Competition

29-30 **Rockland MA**
Rockland Ice Rink
Winterland Skating School
Winterland Halloween Classic

30 **Redwood City CA**
Nazareth Ice Oasis
October Challenge

november

5-6 **Yorktown VA**
Hampton Roads IcePlex
10th Annual Fall Classic

10-13 **Portland OR**
Lloyd Center Ice Rink
24th Annual Ice Crystal Classic

12-13 **Brandon FL**
Ice Sports Forum
ISI Fall Challenge 2011

19-20 **New Ulm MN**
New Ulm Civic Center
New Ulm Fall Festival Figure Skating Competition

december



2-4 **Burbank CA**
Pickwick Ice Skating Center
ISI Artistic Challenge

11 **Great Neck NY**
Andrew Stergiopoulos Rink
8th Annual Long Island Classic

► 2012

february



17-19 **Northbrook IL**
Northbrook Sports Center
ISI Winter Classic

march

10-11 **Natick MA**
FMC William Chase Arena
41st Annual Competition

30-April 1 **Knoxville TN**
Ice Chalet
43rd Annual Robert Unger ISI Team Competition



30-April 1 **St. Peters MO**
St. Peters Rec-Plex
ISI Synchronized Championships

may



26-28 **Orlando FL**
RDV Sportsplex Ice Den
ISI Conference Championships

july



23-28 **Dallas TX**
Dr Pepper StarCenters
McKinney & Frisco
ISI World Recreational Team Championships

shows & exhibitions

december

3-4 **Gatlinburg TN**
Ober Gatlinburg Ice
Christmas on Ice 2011

6-10 **Knoxville TN**
Ice Chalet
24th Annual Nutcracker on Ice

16-17 **Simi Valley CA**
Iceoplex Simi Valley
Cinderella on Ice

17 **Euleless TX**
Dr Pepper StarCenter Euleless
Ice Fest 2011

17-Jan. 3 **Arlington TX**
ICE at The Parks
Holiday at The Parks

18 **Nashville TN**
Centennial Sportsplex
Annual Holiday Ice Show

27-28 **Newark DE**
The Pond Ice Arena
Christmas Show

Ice Light Productions

Designer & Manufacturer of Fine Skating Accessories

P.O. Box 893 | SEAL BEACH, CA 90740 | 562.431.0223
ORDER ONLINE AT WWW.ICELIGHT.BIZ

BOOT GLOVES

SAY GOODBYE TO COLD FEET!

- ✔ KEEP FEET WARM
- ✔ ATTRACTIVE, STYLISH DESIGN
- ✔ EXTEND SKATE BOOT LIFE
- ✔ PROTECT BOOTS FROM MOISTURE & WEAR
- ✔ ADD SUPPORT TO BROKEN DOWN SKATES
- ✔ KEEP LACES FROM SLIPPING & SECURE THE BOOT FIT



NEW ACCESSORIES
COMING THIS SEASON!



Dec. 2-4 **Pickwick Ice Skating Center** **Burbank, California**

Entry & Test Deadline: Oct. 15

Add together creativity on ice, the fun and friendliness of an ISI competition, a fantastic destination and some movie-star glitz and glamour. Then subtract the pressure of technical scores. What do you get? ISI Artistic Challenge at historic Pickwick Gardens Ice Center in Burbank, Calif., the media and entertainment capital of the world! This unique competition has become a favorite for skaters who thrive on showmanship, costumes and personal expression. Show the world your star quality, individually or with friends! And while in Southern California, be sure to take in some of the famous attractions, such as Universal Studios, Hollywood, the Los Angeles Zoo or Knott's Berry Farm. Hollywood, here we come!

More Info:
skateisi.org/Artistic
burbank.com
discoverlosangeles.com
pickwickgardens.com

For event details and entry forms...
skateisi.org/Artistic



Keep Getting This Magazine!

Renew your ISI membership TODAY to continue receiving ALL of ISI's fantastic MEMBERS-ONLY benefits!

3 renewal
choices
and They're
All Winners!

The ISI annual membership term expires on Aug. 31 — it's important that you renew now so you don't miss a single day of membership! Here are a few reasons why:

- Only current ISI members can register tests.
- Only current ISI members can participate in local, district and national ISI competitions and shows.
- Only current ISI members receive *Recreational Ice Skating* magazine and can participate in the ISI Pen Pal Program.
- Only current ISI members receive excess accident insurance.

✓ **GOOD \$15**
1 membership term
(thru August 2012)

✓ **BETTER \$25 SAVE \$5!**
2 membership terms
(thru August 2013)

✓ **BEST \$50 SAVE \$25!!!**
5 membership terms
(thru August 2016)

Renew online today —
it's fast and easy at
www.skateisi.org!

