

recreational

Ice Skating

Summer 2011

SYNCHRO
Results
& Photos

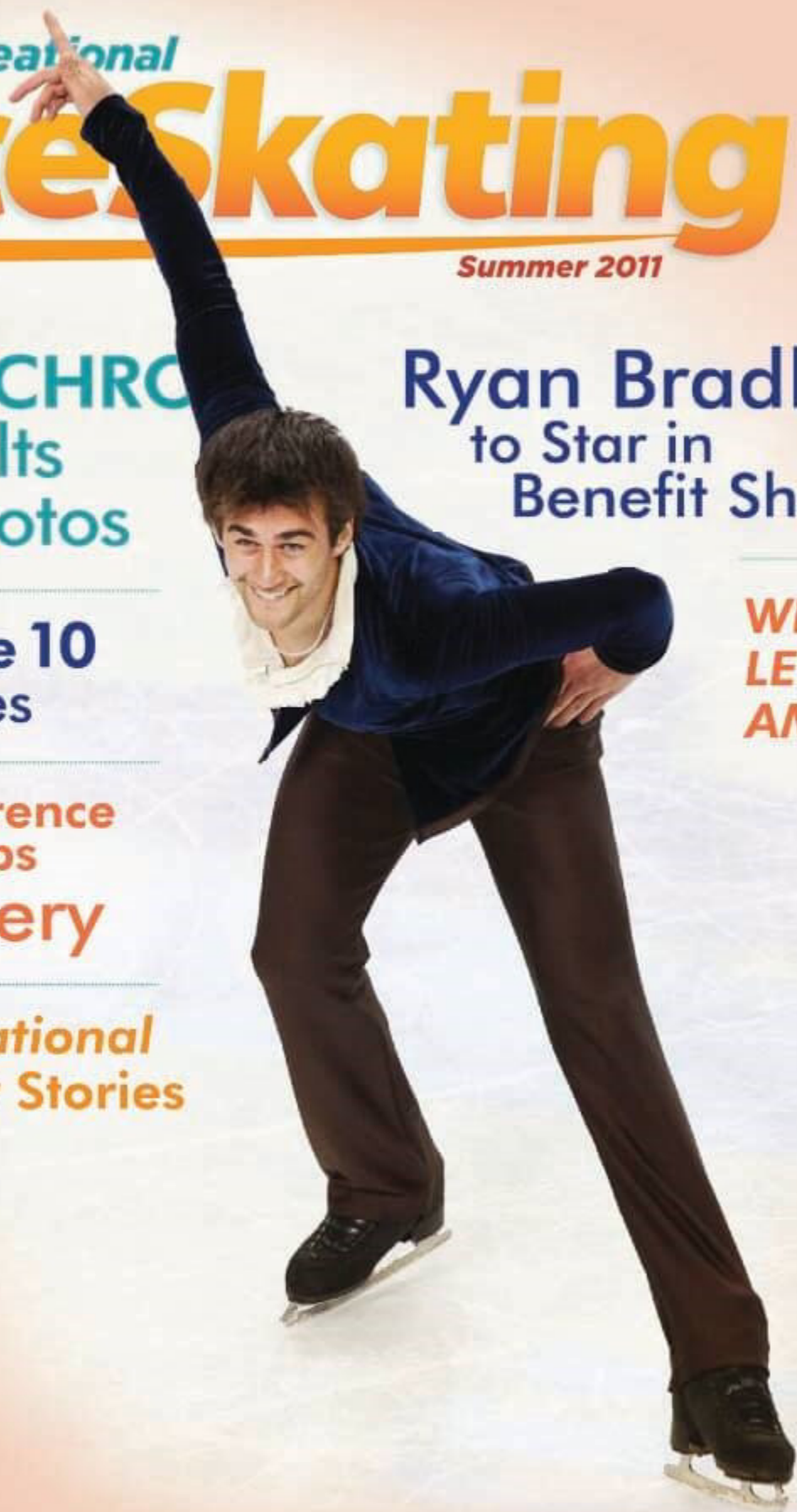
Ryan Bradley
to Star in
Benefit Show

Dance 10
Profiles

**WHAT
LEVEL
AM I?**

**Conference
Champs
Gallery**

**Inspirational
Skater Stories**





Ryan Bradley
2011 U.S. National
Champion
Getty Images

Don't Miss Benefit on Ice

Starring Ryan Bradley

**Reserve your seat now for
the highlight of Worlds week!**

The ISIA Education Foundation is pleased to present Ryan Bradley, 2011 U.S. national champion, as the featured skater at this year's Benefit on Ice Show. Besides having the unique opportunity to see a live performance by a national champion, you'll also get to meet Ryan after the show during an autograph session!

The Benefit Show scouting team will be observing Worlds competitors at all levels throughout the week, selecting participants to join in the Friday night ice skating extravaganza.

Be sure to buy your Skate with the Stars raffle tickets (\$5 each, or five for \$20) at Worlds for an extra chance to perform in the show. The lucky drawing winners will be announced at the Competitors' Party on Wednesday.

If you're selected, you'll have the unique privilege of sharing the program spotlight with ISI peers as well as Ryan Bradley.

Whether you're on the ice or in the stands, this year's Benefit on Ice will be an evening you won't forget!

FRIDAY, JULY 29 • 7 P.M. • FOGERTY ARENA • BLAINE, MINN.

Seating is limited. Reserve your tickets now!

\$20 before July 15, **\$25** at Worlds registration prior to Benefit Show (if not sold out),
\$15 group sales (10 or more tickets through the ISI office prior to July 15)

**ISIA Education
FOUNDATION**

Payment Method:

- Check/Money Order*
 VISA
 MasterCard
 Discover

*Make checks payable to
Ice Skating Institute.
Mail form and payment to:
ISI-Events
6000 Custer Rd., Building 9
Plano, TX 75023

Number of tickets _____ Total \$ _____

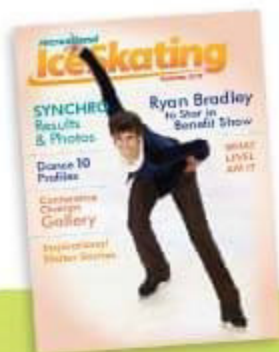
Name for ticket pickup at registration _____

Credit card # _____ Exp. Date _____

Billing address _____

Cardholder's name _____ Telephone (required) _____

Signature _____



what's inside

2011 U.S. Men's Champion & ISIA Education Foundation Benefit on Ice Show Star Ryan Bradley
Recreational Ice Skating | Summer 2011/Vol. 35, Number 3
 Getty Images

Publisher
Ice Skating Institute

Editor
Lori Fairchild

Editorial Advisors
Peter Martell
Randy Winship
Sean Flynn

Print Production & Advertising/Sponsorship Manager
Carol Jackson

Graphic Designer
Dallas Drotz

Recreational Ice Skating ISSN 0164-4106 (USPS 361-570) is published quarterly; Fall, Winter, Spring, and Summer; by the Ice Skating Institute, 6000 Custer Rd., Bldg. 9, Plano, TX 75023. Annual subscription rate is \$12.00 per year. Periodicals postage paid at Plano, TX, and at additional mailing offices. POSTMASTER: Send address changes to *Recreational Ice Skating*, 6000 Custer Rd., Bldg. 9, Plano, TX 75023. Printed in the U.S.A.

Address subscription requests to *Recreational Ice Skating*, 6000 Custer Rd., Bldg. 9, Plano, TX 75023. Extra copies are \$4.00 each (includes postage).

©2011 by the Ice Skating Institute. Reproduction in whole or in part is prohibited unless expressly authorized in writing by publisher. All rights reserved. Opinions expressed by contributors do not necessarily represent the views of the Ice Skating Institute, the publisher or the advertisers. Submissions of manuscripts, materials, photographs, and artwork are made at mailer's risk and must include self-addressed envelope with sufficient postage for return. No responsibility will be assumed for unsolicited materials. ISI reserves the right to edit material submitted for content and space consideration.

► features



Synchronized Championships Sets New Record..... 8

Synchronized Championships Final Round Results..... 10

Synchronized Championships Gallery..... 12

It's Back to Hollywood for Artistic Challenge!..... 15



Ryan Bradley to Offer Skating Clinics at Worlds..... 16

Conference Championships Results.....17

Conference Championships Gallery.....18



Adult Skaters: Are You Ready for Some Sunshine?..... 22

ISI Dance 10 Profiles..... 24

Inspirational Skater Stories..... 26



► departments

News & Notes..... 4

ISIA Education Foundation Report..... 16

Competitors' Corner..... 20

weSKATE Kids Adventures & Activities..... 28

Calendar..... 30

Dedicated to providing leadership,
education and services to the
ice skating industry.

ICE SKATING INSTITUTE
6000 Custer Rd., Bldg. 9
Plano, TX 75023
Phone: (972) 735-8800
Fax: (972) 735-8815
e-mail: isi@skateisi.org
www.skateisi.org

**ISI INTERNATIONAL
HEADQUARTERS**

Executive Director

Peter Martell

**Director of Skating
Programs & Events**

Randy Winship

**Director of Management
Programs & Services**

Sean Flynn

Controller

Donna Crooks

Assistant Controller

Elizabeth Kibat

Membership Coordinator

Mary Ann Mangano

**Print Production & Advertising/
Sponsorship Manager**

Carol Jackson

Information Services Coordinator

Jeff Anderson

Administrative Assistant

Angela Tooley

ISI OFFICERS

President	Jim Hartnett
1st Vice President	Mike Palkin
2nd Vice President	Janice Forbes
Treasurer	Rob McBride
Secretary	Margy Bennett
Immediate Past President	Jim Lange

DIRECTORS

District 1	Tiesha Potvin-Coale
District 2	Robyn Bentley
District 3	Lisa Fedick
District 4	Christine Wilson Brinton
District 6	Jodi Truel
District 7	Jamie Baringer
District 8	Susan D'Aquila
District 9	Heather Hyatt
District 10	Jane Schaber
District 11	Caroline Baker
District 12	Debbie Lane
District 13	Allison Miller
District 14	Paige Scott
District 15	Richard Wise
District 16	Cindy Solberg
District 18	Glyn Jones
Builders & Suppliers	Doug Petars
Instructors	Shane Douglas
Commercial Facilities	Liz Mangelsdorf
Public/Not-for-Profit Facilities	Sara Bolan
Schools/Colleges/ Universities	Alane Swiderski
IAM Chair	Kevin McCormack
PSA Representative	Gerry Lane
USFSA Representative	Homer Hagedorn
ISI/Asia Representative	Paul Wong
AMMA Representative	Trudy Ivory
MIAMA Representative	Dean Mulio
MIRMA Representative	Judy Sniffen
Education Foundation	Don Bartelson
Lifetime Honorary Member	Carol Zdziebko



► news & notes

What's going on at your home ice arena, or with your skating club or team?
Send your news and notes to editor@skateisi.org.



Tropical Ice "In The Navy" FS1 Team
Compulsory event gold medalists:
(seated) Coach Dolly Duke-Maggio
and Grace Prince; (standing, left to
right) Kelly Gorchitarena, Jamie Sa-
bac, Charlotte Toulos, Sara Morales
and Katie Gorchitarena

Tropical Ice Hosts First Competition

Palm Beach SkateZone's Tropical Ice figure skating club in Lake Worth, Fla. hosted its 1st Annual ISI Sea Shore Classic competition on April 17.

It was a spectacular event, remarkably well attended for a first-year competition. We had nearly 100 skaters doing multiple events, including some from as far away as Massachusetts. Being from the Boston area, I deliberately scheduled our competition date around the New England area's school vacation schedule. This allows skaters from the Northeast to participate in our event and thaw out a bit at the same time!

Our skaters are always happy to meet new skaters and welcome them to our wonderful climate, which was a balmy 82 degrees on competition day.

B-j Shue Chapman, team leader of RDV Sportsplex in Orlando, said her skaters had a great time and felt they were treated as if they were at their home rink. With support like this, we will be working hard to be sure next year's competition is even better.

Our ISI club has more than tripled in size over the last year, from 21 competitors to 68, and we are still growing!

—Dolly Duke-Maggio, Skating Director

Kids Helping Kids

Loops were landed, spins were spun and hearts were opened as skaters from age 5 to 31 performed their programs on May 14 before an appreciative and enthusiastic crowd at TBSA Countryside in Clearwater, Fla. The event was organized in an effort to raise funds for the victims of the recent Japanese disasters.

"We all were very impressed with your wonderful performance and well-organized show," Noriko Hines, who attended the show, wrote to TBSA Countryside. "When I heard the Japanese national anthem and saw the Japanese flag last night, they touched me so much. I cried thinking about the devastation."

The show opened with two kimono-clad women from Japan, whose daughters skated in the show, thanking the audience in Japanese for their thoughts, prayers and donations for the people of their country. The Japanese national anthem was played followed by "The Star Spangled Banner."

In addition to 40 individual skaters, three TBSA Countryside synchronized skating teams, three ensembles and a production number performed.

A highlight of the show was the last-minute program addition of a pair of skating champions. Sean Rice and his wife, Jodeyne Higgins, former three-time

Canadian bronze medal pairs team, learned of the fundraiser the morning of the event and immediately volunteered to participate. Their daring performance completely thrilled the audience.

The evening was a huge success and once again our rink family came together to help those in need. Congratulations to TBSA Countryside for a job well done, and our heartfelt wishes go to the victims of the Japanese disasters.

More than \$2,200 was given to the Red Cross after the show, the result of audience donations, sweepstakes, T-shirt, wristbands, and poster and show DVD sales.

"There will always be people who are suffering down the street, across the country and around the world," said Red Cross representative Natasha Salazar. "Hope will always come from people with big hearts like the talented skaters of TBSA Countryside and their families."

—Kathy Winter



TBSA Countryside donated more than \$2,200 to the Red Cross for the victims of the Japanese disasters.

MOLDED ELBOW PROTECTOR

Ultra Crash Molded Elbow protectors provide the same unsurpassed fall protection as our unique Ultra Crash gel knee, hip and spine pads with literally no flexibility issues.



Item # HP 4015 & HP 4016

Skating Safe, Inc.

The Elbow Protector is sold as a unit with our retention sleeve. To wear the pad, simply place the pad inside the sleeve and pull over the elbow holding the pad and sleeve tightly. Then reposition the pad as needed.

Only \$14.75 more than the original!

Skating Safe, Inc.
www.SKATINGSAFE.com
(888) 299 - 2553





The weSKATE Test Standards DVD

A Must-Have for All ISI Skaters, Parents and Coaches!

View detailed demonstrations of the passing standards for each required ISI test maneuver (i.e., jumps, spins, gliding maneuvers and dance step sequences) in the Pre-Alpha through Delta and Freestyle 1-10 levels.

You'll also see evaluations of the skater's moves, and even demonstrations of mistakes during a freestyle test program — and how to avoid them.

Get this handy educational reference for only \$20 (plus shipping) at skateisi.org/dvd or call (972) 735-8800.



news & notes

SK8 for 1 in 8 Raises Thousands for the Cure



Skaters from FMC Ice Sports and Skating Club of Southern New England raised more than \$11,000 for breast cancer research and education.

Based on current rates, 1 in 8 women born in the United States today will develop breast cancer at some time in their lives. This sparked a desire to bring more light to

breast cancer awareness by organizing a skating fundraiser called "SK8 for 1 in 8."

This was a great opportunity to empower skaters to take an active role, through their love of skating, to raise awareness of breast cancer and the importance of prevention and early detection.

Twenty-seven skaters from FMC Ice Sports and Skating Club of Southern New England participated in a skating exhibition fundraiser on Oct. 10 at Aleixo Skating Arena in Taunton, Mass. Skaters who committed to raise a minimum of \$250 skated a solo performance. The top three fundraisers skated two solo performances.

The skaters raised more than \$8,000 before the exhibition even took place. Many skaters wore pink and skated performances dedicated to people they knew who had personally been affected by breast cancer. Skaters chose songs that were meaningful and represented the cause. They made personal signs and skated an opening number to "When Pink Is Just a Color Again" by Kal Hourd. The skaters were joined by special guest Ross Miner, the 2009 U.S. Junior National Champion.

The event was an amazing experience where even more money was raised. All proceeds from the event ticket sales, program books, a bake sale with pink ribbon bake sale items and raffle table were added to the total amount raised by individual skaters and donated to Susan G. Komen for the Cure.

The total amount raised from the skaters' fundraising efforts and the day of the event exceeded their goal of \$10,000. Team "SK8 for 1 in 8" raised a total of \$11,640.50, which will help support the lifesaving work of Susan G. Komen for the Cure, the world's largest source of nonprofit funds dedicated to the fight against breast cancer. Money raised will help fund critical breast cancer research and help provide local education, screening and treatment programs that impact people in their community.

—Anne Marie Berube

NEW!
Summer
Sport Inserts
Available Mid-July 2011



This Colorful Collection captures all of the things we love about Summer!

*Featuring "SK8" Part of ZUCA's Summer 2011 Collection



2011 Synchronized Champs Sets a New Record

A record-breaking 137 teams from across the U.S. — and for the first time, Canada — competed in this year's 15th annual ISI Synchronized Championships at Edge Ice Arenas in Bensenville, Ill.

Congratulations to the Synchro St. Louis Diamond Edges from St. Peters Rec-Plex, winners of the Boyd Wietector Trophy. Barbra Wietector presented the trophy named for her late husband, a beloved ISI event announcer and former president of both the ISI board of directors and the ISIA Education Foundation.

Longtime coach and ISI supporter Toni Friedland announced her retirement after 40 years of coaching. Her Glenview Ice Center synchro teams have participated in all 15 years of the Synchro Champs event. We're pleased that she will continue to serve as an ISI judge and referee.

The second annual Synchro Showcase was another hit with rave reviews. Because skaters, coaches and



Barbra Wietector presents the Boyd Wietector Trophy to the Synchro St. Louis Diamond Edges.

ActionPhotos.com

parents are so busy preparing for their own team's performances, they rarely have time to watch teams in other events and divisions. The Saturday night showcase event provided an opportunity for teams to relax and enjoy a sampling of the wide variety of performances at this year's

Synchro Champs event.

Variety performances in the Showcase were provided by: Chicago Jazz, six-time national Juvenile champions from Rolling Meadows Ice Arena; St. Peters Rec-Plex; McFetridge Sports Center; Tampa Bay Skating Academy Oldsmar; and the home rink in Bensenville.

The featured skater was Mary Beth Marley, a Chicago native and 2011 national competitor in Junior singles and Senior pairs.

Next year's Synchronized Championships is set for March 30-April 1 at St. Peters Rec-Plex near St. Louis.

Turn the page for final round results and photos. **ISI**



ICE SKATING WITHOUT THE ICE

Can be used on any smooth surface indoors or out

Behaves like an ice-skate blade



THE PICSKATE - The most responsive inline skate EVER!

www.picskate.com



Find us on **facebook**®

Classified Advertising

The Champion Behind The Champion - Recipient of Prestigious Mom's Choice Award and Dove Seal of Approval. \$23.95 + S&H.
CUTE! ADORABLE plush LambieAnn book character 10" & 14" (\$15 & \$20)
www.BarbarAnn.com (440) 546-9152



Ice Skating Institute

To place classified advertising, call Carol Jackson, advertising sales manager, at (972) 735-8800, fax to (972) 735-8815 or send e-mail to cjackson@skateisi.org. The deadline for the next issue of *Recreational Ice Skating* is April 25.

Keep Getting This Magazine!

Renew your ISI membership TODAY to continue receiving ALL of ISI's fantastic MEMBERS-ONLY benefits!

3 renewal
choices
and They're
All Winners!

The ISI annual membership term expires on Aug. 31 — it's important that you renew now so you don't miss a single day of membership! Here are a few reasons why:

- Only current ISI members can register tests.
- Only current ISI members can participate in local, district and national ISI competitions and shows.
- Only current ISI members receive *Recreational Ice Skating* magazine and can participate in the ISI Pen Pal Program.
- Only current ISI members receive excess accident insurance.

✓ **GOOD \$15**
1 membership term
(thru August 2012)

✓ **BETTER \$25 SAVE \$5!**
2 membership terms
(thru August 2013)

✓ **BEST \$50 SAVE \$25!!!**
5 membership terms
(thru August 2016)

Renew online today —
it's fast and easy at
www.skateisi.org!

Or mail in
the attached
postcard.





15TH ANNUAL ISI SYNCHRONIZED CHAMPIONSHIPS

Edge Ice Arenas
Bensenville, IL
April 8-10

FINAL ROUND EVENT RESULTS

For a complete list of results, go to skateisi.org/synchro

COMPULSORY TEAMS

Jr. Youth Formation Compulsory

- | | |
|------------------|------------------------------------|
| 1 Icettes | Homewood-Flossmoor Ice Arena |
| 2 Electric Edges | Skating Club of Greater Youngstown |

Youth Formation Compulsory

- | | |
|-------------------------|-----------------------------------|
| 1 Oldsmar Shining Stars | Tampa Bay Skating Academy Oldsmar |
| 2 Fort Wayne Fire | Summit City Skaters |

Sr. Youth Formation Compulsory

- | | |
|---------------------|------------------------------------|
| 1 Arctic Snowflakes | Lou & Gib Reese Ice Arena |
| 2 Electric Edges | Skating Club of Greater Youngstown |

Master Formation Compulsory

- | | |
|-------------------------|------------------------------------|
| 1 Sophisticated Company | Skating Club of Greater Youngstown |
|-------------------------|------------------------------------|

Jr. Youth Skating Compulsory

- | | |
|-----------|------------------------------|
| 1 Icettes | Homewood-Flossmoor Ice Arena |
|-----------|------------------------------|

Youth Skating Compulsory - Group A

- | | |
|------------------------------|--------------------------|
| 1 Synergy-Beginner | Webster Groves Ice Arena |
| 2 Synchro St. Louis Onyx Ice | St. Peters Rec-Plex |
| 3 Texas All Stars | PSA StarCenter |
| 4 St. Louis Fleur de Lis | Brentwood Ice Arena |

Youth Skating Compulsory - Group B

- | | |
|-------------------------|-----------------------------------|
| 1 Oldsmar Shining Stars | Tampa Bay Skating Academy Oldsmar |
| 2 Synchro Panache | Minneapolis/Augsburg Arena |
| 3 Wisconsin Edge | Pettit National Ice Center |

Sr. Youth Skating Compulsory

- | | |
|------------------------------|-------------------------------------|
| 1 Synchro St. Louis Ice Gems | St. Peters Rec-Plex |
| 2 Wisconsin Edge | Pettit National Ice Center |
| 3 Synergy-Open Juvenile | Webster Groves Ice Arena |
| 4 Silver Blade Brigade | Wayne C. Kennedy Recreation Complex |

Teen Skating Compulsory

- | | |
|-----------------------------------|-------------------------------------|
| 1 Synchro St. Louis Diamond Edges | St. Peters Rec-Plex |
| 2 Synchro Panache | Minneapolis/Augsburg Arena |
| 3 Gold Blade Brigade | Wayne C. Kennedy Recreation Complex |
| 4 Capital Classics | Washington Park Ice Arena |

Adult Skating Compulsory

- | | |
|---------------------|----------------------------|
| 1 Eble Elite Edgers | Pettit National Ice Center |
| 2 Inferno | Summit City Skaters |

FORMATION TEAMS

Tot Formation

- | | |
|---------------|--------------------------|
| 1 Synergy | Webster Groves Ice Arena |
| 2 Precicettes | Center Ice of Du Page |

Jr. Youth Formation - Group A

- | | |
|----------------------------------|----------------------|
| 1 Extreme | Rink Side Ice Arena |
| 1 Revolution | Carlson Ice Arena |
| 2 Fusion | Toyota Sports Center |
| 3 St. Louis Fleur de Lis - Minis | Brentwood Ice Arena |

Jr. Youth Formation - Group B

- | | |
|-------------------------|------------------------------------|
| 1 Ice Crystals | Crystal Ice House |
| 2 Electric Edges | Skating Club of Greater Youngstown |
| 3 St. Louis North Stars | Ice Zone |
| 4 Ice Cubes | University of Illinois Ice Arena |

Jr. Youth Formation - Group C

- | | |
|-----------|------------------------------|
| 1 Icettes | Homewood-Flossmoor Ice Arena |
| | St. Peters Rec-Plex |

2 Synchro St. Louis

- | | |
|-----------------|-------------------------|
| Emerald Blades | Downers Grove Ice Arena |
| 3 The Dazzlers | Arctic Ice Arena |
| 4 Arctic Blaze | Edge Ice Arenas |
| 5 Crystal Edges | |

Jr. Youth Formation - Group D

- | | |
|----------------------------|--------------------------|
| 1 Teams Elite | Northbrook Sports Center |
| 2 Twin Rinks Shining Stars | Twin Rinks Ice Pavilion |
| 3 Chicago Skates | McFetridge Sports Center |
| 4 Kansas City Illusion | Line Creek Ice Arena |

Youth Formation - Group A

- | | |
|--------------------------------|-----------------------|
| 1 Wzettes | Joliet Park District |
| 2 Synchro St. Louis Ruby Edges | St. Peters Rec-Plex |
| 3 32 Degrees | US Ice Sports Complex |
| 4 Revolution | Carlson Ice Arena |
| 5 Starfire | Rocket Ice Arena |

Youth Formation - Group B

- | | |
|-------------------------|-------------------------------------|
| 1 Oldsmar Shining Stars | Tampa Bay Skating Academy Oldsmar |
| 2 The Dazzlers | Downers Grove Ice Arena |
| 3 Precicettes | Center Ice of Du Page |
| 4 Basic Blade Brigade | Wayne C. Kennedy Recreation Complex |
| 5 Crystal Edges | Edge Ice Arenas |

Youth Formation - Group C

- | | |
|---------------------|---------------------|
| 1 Mini Blades | Glenview Ice Center |
| 2 Silver Leafs | Leafs Ice Centre |
| 3 Ice Crystals | Crystal Ice House |
| 4 Livonia Ice Chips | Livonia Eddie Edgar |

Sr. Youth Formation

- | | |
|---------------------|------------------------------------|
| 1 Electric Edges | Skating Club of Greater Youngstown |
| 2 Arctic Snowflakes | Lou & Gib Reese Ice Arena |
| 3 Icettes | Homewood-Flossmoor Ice Arena |

Master Formation

- | | |
|--------------------------|-------------------------------------|
| 1 Sophisticated Company | Skating Club of Greater Youngstown |
| 2 Kettering Ice Kadettes | Kettering Adult Figure Skating Club |
| 3 Fantasia | Farmington Hills Ice Arena |
| 4 Blaze | Summit City Skaters |

SKATING TEAMS

Jr. Youth Skating

- | | |
|--------------------------------|----------------------------|
| 1 St. Louis Shining Stars | Ice Zone |
| 2 Wisconsin Edge | Pettit National Ice Center |
| 3 Robert Crown Sapphire Jewels | Robert Crown Ice Center |

Youth Skating Select – Small

- | | |
|--------------------------|----------------------|
| 1 Fusion | Toyota Sports Center |
| 2 Darien Diamonds | Darien Sportsplex |
| 3 Texas All Stars | PSA StarCenter |
| 4 St. Louis Fleur de Lis | Brentwood Ice Arena |
| 5 Extreme | Rink Side Ice Arena |
| 6 Team Chiller | Chiller LLC |

Youth Skating Select – Large

- | | |
|----------------------------|----------------------------|
| 1 Synchro Panache | Minneapolis/Augsburg Arena |
| 2 Sparklers | Cabin John Ice Rink |
| 3 The Dazzlers | Downers Grove Ice Arena |
| 4 Robert Crown Ruby Jewels | Robert Crown Ice Center |
| 5 Capital Classics | Washington Park Ice Arena |
| 6 Starr Blades | Franklin Park Ice Arena |

Sr. Youth Skating Select

- | | |
|-------------------------------|-------------------------------------|
| 1 The Dazzlers | Downers Grove Ice Arena |
| 2 Ice Cubes | University of Illinois Ice Arena |
| 3 Livonia Ice Cubes | Livonia Eddie Edgar |
| 4 Silver Blade Brigade | Wayne C. Kennedy Recreation Complex |
| 5 St. Louis Fleur de Lis | Brentwood Ice Arena |
| 6 Team Chiller | Chiller LLC |
| 6 Robert Crown Emerald Jewels | Robert Crown Ice Center |

Teen Skating Select

- | | |
|--------------------------|-------------------------------------|
| 1 Icettes Intermediate | Homewood-Flossmoor Ice Arena |
| 2 Icettes Open Juvenile | Homewood-Flossmoor Ice Arena |
| 3 Capital Classics | Washington Park Ice Arena |
| 4 St. Louis Fleur de Lis | Brentwood Ice Arena |
| 5 Gold Blade Brigade | Wayne C. Kennedy Recreation Complex |
| 6 Livonia Icettes | Livonia Eddie Edgar |
| 6 Team Chiller | Chiller LLC |

Youth Skating Premier – Small

- | | |
|---------------------------------|------------------------------|
| 1 Icettes | Homewood-Flossmoor Ice Arena |
| 2 Synchro St. Louis Jade Blades | St. Peters Rec-Plex |
| 3 Kansas City Illusion | Line Creek Ice Arena |
| 4 Fantasia | Farmington Hills Ice Arena |
| 5 Starfire | Rocket Ice Arena |
| 6 Arctic Blaze | Arctic Ice Arena |
| 6 Ice Crystals | Crystal Ice House |

Youth Skating Premier – Large

- | | |
|---------------------------|---------------------------|
| 1 Teams Elite | Northbrook Sports Center |
| 2 Silver Leafs | Leafs Ice Centre |
| 3 Stellar Blades | Glenview Ice Center |
| 4 Synergy-Preliminary | Webster Groves Ice Arena |
| 5 St. Louis Synchro Stars | Ice Zone |
| 6 Precicettes | Center Ice of Du Page |
| 6 Oldsmar Shining Stars | Tampa Bay Skating Academy |
| 6 Chicago Skates | Oldsmar |
| | McPetridge Sports Center |

Sr. Youth Skating Premier

- | | |
|------------------------------|----------------------------|
| 1 Synergy-Juvenile | Webster Groves Ice Arena |
| 2 Silver Leafs | Leafs Ice Centre |
| 3 Synchro St. Louis Ice Gems | St. Peters Rec-Plex |
| 4 Junior Blades | Glenview Ice Center |
| 5 Wisconsin Edge | Pettit National Ice Center |
| 6 Revolution | Carlson Ice Arena |
| 6 Arctic Blaze | Arctic Ice Arena |
| 6 Precicettes | Center Ice of Du Page |
| 6 Kenosha Ice Prisms | Kenosha Ice Rink |

Teen Skating Premier

- | | |
|-----------------------------------|----------------------------|
| 1 Synchro St. Louis Diamond Edges | St. Peters Rec-Plex |
| 2 Synergy-Novice | Webster Groves Ice Arena |
| 3 Wisconsin Edge | Pettit National Ice Center |
| 4 Synchro Panache | Minneapolis/Augsburg Arena |
| 5 Kansas City Illusion | Line Creek Ice Arena |
| 6 Ice Sabres | Shattuck-St. Marys |
| 6 Sparklers | Cabin John Ice Rink |

Adult Skating

- | | |
|------------------------|----------------------|
| 1 Edmonton Ice Edition | Gateway Skating Club |
| 2 Revolution 1 | Carlson Ice Arena |
| 3 Revolution 2 | Carlson Ice Arena |
| 4 Robert Unger Stars | Ice Chalet |

Master Skating

- | | |
|--------------------------|-------------------------------------|
| 1 La Furia | Ice Centre at the Promenade |
| 2 Kettering Ice Kadettes | Kettering Adult Figure Skating Club |
| 3 Radiance on Ice | Seven Bridges Ice Arena |
| 4 Synchro Belles | Alpine Ice Arena |
| 5 Eble Elite Edgers | Pettit National Ice Center |

DANCE TEAMS

Sr. Youth Dance

- | | |
|--------------------------|--------------------------|
| 1 Northbrook Jr. Icettes | Northbrook Sports Center |
|--------------------------|--------------------------|

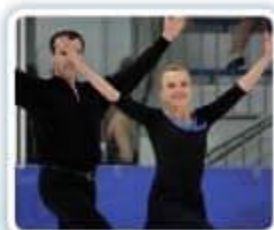
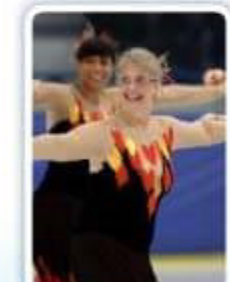
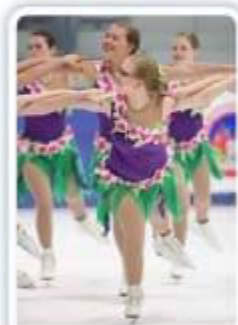
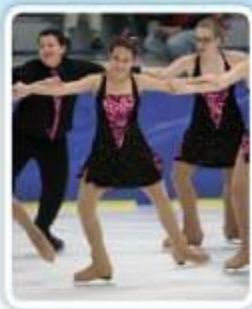
Teen Dance

- | | |
|----------------------|--------------------------|
| 1 Northbrook Icettes | Northbrook Sports Center |
| 2 Crystal Edges | Edge Ice Arenas |



2011 ISI SYNCHRONIZED

Professional On-Ice Photography by ActionPhotos.com



CHAMPIONSHIPS GALLERY





Dec. 2-4 **Pickwick Ice Skating Center** **Burbank, California**

Entry & Test Deadline: Oct. 15

Add together creativity on ice, the fun and friendliness of an ISI competition, a fantastic destination and some movie-star glitz and glamour. Then subtract the pressure of technical scores. What do you get? ISI Artistic Challenge at historic Pickwick Gardens Ice Center in Burbank, Calif., the media and entertainment capital of the world! This unique competition has become a favorite for skaters who thrive on showmanship, costumes and personal expression. Show the world your star quality, individually or with friends! And while in Southern California, be sure to take in some of the famous attractions, such as Universal Studios, Hollywood, the Los Angeles Zoo or Knott's Berry Farm. Hollywood, here we come!

More Info:
skateisi.org/Artistic
burbank.com
discoverlosangeles.com
pickwickgardens.com

For event details and entry forms...
skateisi.org/Artistic



It's Back to Hollywood for Artistic Challenge!

by Lori Fairchild



This December, the ISI Artistic Challenge competition returns to the site of its largest turnout ever, Pickwick Ice Skating Center in Burbank, Calif., the media and entertainment capital of the world.

Now in its seventh year, Artistic Challenge is a unique national event that allows you to take a break from technical scores and show the world your star quality, individually or with your skating friends. This competition is all about what every skater longs to express on the ice: creativity and showmanship, with imaginative and dramatic costumes and props.

Be sure to take advantage of the discounted entry rates on featured 2011 events: enter any individual or partner event for \$75 and get a Rhythmic Skating, Solo Surprise or Jump & Spin entry for only \$10! The Themed Spotlight for this year is "Best of Broadway" — choose your favorite show tune from any musical and bring it to life, on ice!

In addition to ISI's great selection of solo events, there are plenty of fun group events to do with your friends. Entertainment value is key at Artistic Challenge, so "the more, the merrier" for more

fun on ice! And speaking of "merry," the timing of this competition makes it ideal for fine-tuning your holiday show numbers.

The ISI Recreational Skating Program also now includes four new Open Freestyle tests (Bronze, Silver, Gold and Platinum) with corresponding competition events. These new levels may be used by both ISI and USFS skaters, making ISI competitions more accessible to cross-over skaters by providing flexibility in maneuvers and eliminating the need for additional testing.

Pickwick Ice is the perfect stage for Artistic Challenge, with seating for 800, a lounge with full-service snack bar and video arcade, a sport shop and even a state-of-the-art bowling facility next door. The adjacent Pickwick Gardens offers two and a half acres of beautifully landscaped, flowering gardens, fountains and winding paths.

While in Burbank, be sure to take in the nearby Los Angeles Zoo or a studio tour, or perhaps attend the filming of your favorite TV show or a movie premiere. Among the world-famous companies with production facilities in Burbank are NBC Universal, The Walt Disney Co. Warner Bros. Entertainment and Nickelodeon Studios. Downtown Los Angeles is only 12 miles away.

Go to skateisio.org/artistic for entry forms and other Artistic Challenge details. The entry and test deadline is Oct. 15.

SP-Teri



ZERO GRAVITY LICENSE TO FLY

The latest light weight skating boots.

Standard Features:

- V notch for optimal ankle flex.
- Low cut back for ideal toe pointing and better Achilles comfort.
- Cushioned insole for shock absorption with anti friction top cover.
- Suede synthetic lining to wick moisture from feet and ankle comfort.

Available at a SP-Teri dealer near you.

SP-Teri Co., Inc. 436 North Canal Street, Unit 1 • South San Francisco, CA 94080

Phone (650) 871-1715 • Fax (650) 871-9062 • www.spteri.com



Ryan Bradley

to Offer Skating Clinics at Worlds



The star of this year's Benefit on Ice during ISI World Recreational Team Championships in Blaine, Minn. is none other than 2011 U.S. Men's Champion Ryan Bradley. The 27-year-old champion comes from a family of figure skaters and lives in Colorado Springs, Colo., where he trains at Broadmoor Skating Club while studying business at the University of Colorado.

Ryan, who says the greatest influence in his life has been 1988 Olympic champion Brian Boitano, coaches at the World Arena and will offer several clinics prior the Benefit on Ice show on Friday, July 29 during ISI Worlds. The clinics will focus on technical tips for improving jumps and spins, with sessions divided by ISI test level. Each skater may participate in only one session, based on their highest test passed (Freestyle 4 and above).

Skaters must be entered in at least one event of the ISI World Team Championships competition to participate in the clinics. Each participant will receive an autographed photo from Ryan at the conclusion of their session. This is a unique opportunity to skate with and learn from a national champion, but enrollment is limited and available on a first-come basis. To register, go to skateisi.org/worlds and select the Ryan Bradley Clinic button. The enrollment fee is \$25.

Whether or not you participate in one of Ryan's clinics, don't miss him in the Benefit on Ice, also on July 29. For more information and the ticket order form, see the inside front cover of this issue or go to skateisi.org/worlds and click on Benefit Show button.

ISIA Education FOUNDATION Recent Donations

The ISIA Education Foundation awards academic scholarships to skaters who demonstrate excellence both on and off the ice. Congratulations to this year's scholarship recipients: Melanie Rose McDonough, Downingtown West High School, Downingtown, Pa.; and Melissa Felps, Francis Howell Central School, St. Charles, Mo. Watch for their profiles in an upcoming issue. To make a tax-deductible contribution to this worthy cause, go to www.skateisi.org/foundation.

Pledge Guarantor

Donald Bartelson
Facility Management Corp.
ISI District 1
Riedell Skate Co.
Barbara Wietecter
Wonderland of Ice
Zamboni Company

Pledge Sponsor

Larry Fies
Karen Gibbons
Burt & Judith Sniffen

Supporter

Rainbo Sports
Julia Smith (in memory
of Erika Amundsen)

Friend

Blade Brigade (on behalf
of Julie Boren, in memory
of Dan Boren)
David Franzman
Laura Lehman
Andy Martlett
Cassandra Gonzalez
Sophie Weber

Hotter Than Texas! Conference Champs Draws 570 Skaters



Skaters and coaches from PSA StarCenter accepted the overall championship trophy on behalf of their winning team.



The 2nd ISI Conference Championships was hotter than Texas on Memorial Day weekend, when more than 570

skaters representing 28 rink teams from 13 states — including Alaska! — took to the ice at the McKinney and Frisco Dr Pepper StarCenters.

The overall team championship and District 11 trophy went to the PSA StarCenter team of Plano, Texas, with 790 total team points. It was a bittersweet victory for the team, whose facility closed last month. The competition was the last time for the skaters, who have now moved to other area rinks, to represent the PSA facility.

Tampa Bay Skating Academy Countryside, the winner of the 1st ISI Conference Championships in 2009, took home second place this time. "We felt like we had won an Oscar without even knowing we were nominated!" said TBSA coach Kathy Winter.

The Board of Directors Trophy went to Superstars Figure Skating Club of Elk Grove Village, Ill.

If you missed this opportunity to skate in the Lone Star State, mark your calendar for 2012 Worlds, which also will be held in Dallas.

Next year's Conference Championships returns to its point of origin, Orlando, Fla.

TOP 10

PLACE	TEAM	TOTAL POINTS
1	PSA StarCenter	790.0
2	Tampa Bay Skating Academy Countryside	573.5
3	Ice at The Parks	554.5
4	City of Bowie Ice Arena	485.5
5	Sierra Providence Events Center-Sun City	455.5
6	Galleria Ice Skating Center	446.5
7	Dr Pepper StarCenter McKinney	422.0
8	Stars of Austin Figure Skating Club	405.0
9	Dr Pepper StarCenter Farmers Branch	385.5
10	Dr Pepper StarCenter Plano	368.0

Emmanuel Savary

i Skate

2011
Gardena Spring
Trophy, Italy
Novice
Champion

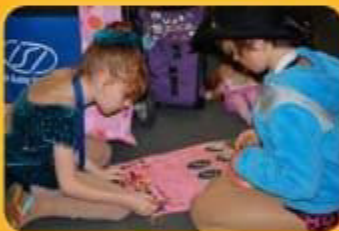
2010
U.S. Novice
National
Silver
Medalist

2009
Intermediate
Men Junior
National
Champion

facebook.com/RiedellSkates
iskateRiedell.com
 ©2011 Riedell Shoes, Inc.

ISI
CONFERENCE **CHAMPIONSHIPS**
DALLAS 2011

ISI CONFERENCE



CHAMPIONSHIPS GALLERY





competitors' corner

BY RANDY WINSHIP | ISI Director of Skating Programs & Events

What Level Am I?

Some parents, skaters — and even coaches — are having a problem deciding what level to put on their entry form for ISI competitions. This can be especially true when the skater is competing in both the traditional Freestyle and new Open Freestyle events. Even though school is out, let's put our brainpower to work for a few minutes. It's really as easy as 1-2-3-4!

SKATER #1 – If you have passed the traditional Freestyle 1-10 tests and are competing in the equivalent Open Freestyle level on the chart below, then your highest ISI test level is always the highest traditional Freestyle test level, whether you are competing in the traditional Freestyle event, the Open Freestyle event or both. No additional Open Freestyle test is required.

Traditional Freestyle

Freestyle 1-3
Freestyle 4-5
Freestyle 5-6
Freestyle 7-10

Open Freestyle

Bronze
Silver
Gold
Platinum

Note: Freestyle 5 skaters have a choice of doing either the Silver or Gold level, so check with your coach to make sure your program content fits in the correct level.

SKATER #2 – If you have passed the traditional Freestyle 1-10 tests and plan to skate in a higher-level Open Freestyle event, you must take, pass and register the higher Open Freestyle test. The new (higher) Open Freestyle level becomes your highest ISI test level and you can no longer compete in the lower traditional Freestyle level event.

SKATER #3 – If you have not passed any traditional Freestyle 1-10 tests but you have passed USFS Free Skate tests (Moves in the Field tests have no bearing on the levels shown in the chart), then you can “cross over” to compete in the equivalent-level Open Freestyle events (see chart). To compete in any ISI competition, you must only take, pass and register the corresponding ISI Open Freestyle test — and then that Open Freestyle level will become your highest ISI test level.

USFS Free Skate

Pre-Preliminary
Adult Pre-Bronze
Adult Bronze

ISI Open Freestyle

Bronze

Preliminary
Pre-Juvenile
Adult Silver

Silver

USFS Free Skate

Juvenile
Intermediate
Adult Gold

ISI Open Freestyle

Gold

Novice
Junior
Senior

Platinum

SKATER #4 – If you have not passed any traditional Freestyle 1-10 tests, but have passed USFS Free Skate tests and want to cross over and skate at a higher level than listed on the equivalent chart above, you must take, pass and register the equivalent level Open Freestyle test and any higher Open Freestyle test(s) to compete in the higher Open Freestyle level.

NOTE: Your coach should carefully review your USFS program content to check the maneuver limitation for Bronze (FS3 and below), Silver (FS5 and below), and Gold (FS6 and below). In most cases, USFS skater must move up at least one level from the equivalency chart to use the same program content.

TIP: If you have passed the equivalent traditional Freestyle 1-10 test as the Open Freestyle event level, always use the traditional Freestyle test level as your highest ISI test level.

If you have not passed any traditional Freestyle 1-10 tests and are competing in any ISI competition based on your Open Freestyle test level, you are eligible to compete in: Artistic, Footwork, Interpretive, Jump & Spin, Open Freestyle, Rhythmic, Spotlight and Surprise events. See the current *ISI Handbook* for special guidelines for participation in Solo Compulsory events.

Skaters who have only passed the Open Freestyle tests cannot participate in traditional Freestyle 1-10 events without having passed the traditional Freestyle 1-10 tests in the traditional manner.

There you have it – the four different scenarios where you might be. Even if you are in one category now, you could change to a different scenario for the next competition.

It is very important that both skaters and parents take time to carefully complete each competition entry form with the skater's correct *high* test level. Remember to use the "tip" above when you register for any ISI competition. That will make it easier for you — and the competition director!

QUICK QUIZ

Now that you have the information, it's time for a Quick Quiz. Let's see if you can tell the highest ISI test level for these skaters below:

1. This skater has passed the Freestyle 2 test and is competing in both the FS2 and the Bronze freestyle events. *What is this skater's highest level?*
2. This skater has passed Freestyle 4, but recently passed the Gold freestyle test. *What is this skater's highest level?*
3. This skater has passed Freestyle 7, but she is only competing in the Platinum freestyle and Artistic events. *What is this skater's highest level?*
4. This skater has passed Freestyle 3, but has also passed the Silver Freestyle test. *What is this skater's highest level?*

Please e-mail any questions or additional information requests to randy@skateisi.org.

High-Level Tests

Congratulations to the following ISI skaters who have recently passed high-level tests:

FREESTYLE 9

Gabby McMullen
White Bear Lake
Sports Center (MN)

Amanda McCann
SportQuest Skating
Academy Parade
(MN)

FREESTYLE 8

Courtney Dziodosz
Franklin Park Ice
Arena (IL)

Maggie Orchard
Franklin Park Ice
Arena (IL)

DANCE 8

Michelle Fee
Ice Sports Forum (FL)

Sarah Bowman
Tampa Bay Skating
Academy Oldsmar
(FL)

Sarah Fuller
Clearwater Ice Arena
(FL)

Jennifer Duncan
Tampa Bay Skating
Academy Oldsmar
(FL)

Grant Kulenkamp
White Bear Lake
Sports Center (MN)



Adult Skaters: Are You Ready for Some Sunshine?

by Lori Fairchild

You're never too old to win a medal or make new friends! As an ISI member, you are eligible and encouraged to compete in all local, district and national ISI competitions — including the one created just for skaters age 18 and older, ISI Adult Championships.

The setting for this year's Adult Champs, Sept. 30-Oct. 2, is Tampa Bay Skating Academy-Oldsmar in the Sunshine State. That means you'll be minutes from the country's top white "sugar" sand beaches, golf courses galore, arts, shopping, dining — all the ingredients for a Great-Skate-Vacate getaway!

Many ISI adult skaters return to ice skating — or even take to the ice for the first time — post-retirement. Besides providing excellent exercise, ISI competitions offer an enjoyable way to show off your skills in a friendly environment.

Choose the events that best fit your current level and ability, including all levels of technical competition events or the "creative" group that features Artistic, Spotlight,

Interpretive, Surprise, Rhythmic, Dance and several others.

Individual and partner skating isn't your thing? Then join a group and skate with your friends in a team event such as Synchronized, Ensemble, Production, Kaleidoskate or Family Spotlight.

The ISI Recreational Skating Program also now includes four new Open Freestyle tests (Bronze, Silver, Gold and Platinum) with corresponding competition events. These new levels may be used by both ISI and USFS skaters, making ISI competitions more accessible to cross-over skaters by providing flexibility in maneuvers and eliminating the need for additional testing.

More information on 2011 Adult Champs in Oldsmar, Fla. can be found on the inside back cover of this issue and at skateisi.org/AdultChamps. Entry and test deadline is Aug. 15.

Here's what some of your peers have to say about the ISI Adult Skating Program and Adult Championships competition:



"The ISI Adult Championship 2010 in Las Vegas was my first experience in a competition with only adult figure skaters. I was thrilled to see so many adult skaters who were so passionate about the sport of figure skating. There were young adults as well as adults who have been skating for decades, beginners to advanced, who came from all over the country to take part in this exciting event. Since the focus of ISI Adult Championships is on adult skaters, there was no

shortage of adult competitors, which meant I often saw three skaters standing on the medal podium. All the skaters cheered each other on and there was a sense of camaraderie and enjoyment among us all. I highly recommend all adult skaters to take part in ISI Adult Championships. My experience was something that I will treasure for years to come."

—Lisa Chao, Freestyle 1, Foster City, Calif.

"Because there are very few adult only competitions, many skaters are becoming interested in the ISI Adult Champs as another chance to compete and participate. ISI always does a great job of hosting a friendly and welcoming event. The level of skating at ISI Adult Champs, especially in the new Collegiate category, is at a very high level. The new Open Freestyle events also allow USFS skaters to participate with the same program as they are using that season. With no need to have a separate program for ISI events, this makes crossing over easy. With more categories to compete in than in USFS Adult Nationals, this makes the trip to ISI Adult Champs even more fun. I enjoy bringing my adult skaters to ISI Adult Champs — since everyone can participate, we can do group numbers and have a great time together!"

—Burton Powley, ISI Platinum, Des Moines, Iowa



"Having now competed in several ISI pro partner competitions since 2009, I have surpassed prior skating barriers and achieved new personal levels of accomplishment on ice. This has been so gratifying to me on many levels. The excitement and thrill of competition has truly motivated me to set goals, execute and push myself further than ever before. ISI has been such a positive and fostering environment to compete in, and the competitions provide support and positive energy to so many. The ISI atmosphere is very nurturing and has made many of my childhood dreams come true. This has enabled me to thrive as a figure skater and made me a 'skating-for-lifer'! It just goes to show you that you can realize your skating dreams at any age."

—Laurie Stern, Freestyle 2, Dance 4, Tampa, Fla.

RECREATIONAL ICE SKATING, SUMMER 2011



Play the Night Away at the Competitors' Party!

Three hours of food, fun and friendship at Brunswick Zone XL, exclusively for ISI Worlds participants and their families!

Enjoy a tasty dinner buffet with something to please every palate, then have a ball on the bowling lanes, in the arcade, in the bumper cars, playing laser tag and dancing to the DJ's tunes.

Be sure to order your tickets from the ISI office before July 15 for advance reservations plus a \$5 savings.

**Wednesday,
July 27, 7-10 p.m.**

Brunswick Zone XL
11351 Ulysses Street NE
Blaine, Minn. 55434



By July 15: \$20 over age 5/\$15 age 5 & under

Tickets over age 5 _____

After July 15: \$25 over age 5/\$20 age 5 & under

Tickets age 5 & under _____

Brunswick Zone XL Competitors' Party includes:

- Dinner buffet
- 3 hours arcade play
- 1 session laser tag*
- 1 hour bowling (shoes incl.)
- 1 round bumper cars
- DJ, dancing & games

*Must be 42" tall

PAYMENT TYPE (circle one) Check VISA MasterCard Discover TOTAL \$ _____

Credit card number _____ Exp. Date _____

Name on Card (please print) _____

Credit Card Billing Address _____

Cardholder Signature _____ Phone _____

(OPTIONAL) ISIA Education Foundation Donation (tax deductible IRS# 36-3638131) \$ _____

Advance ticket orders must be received in the ISI office by July 15.
Please pick up your tickets at the ISI Worlds registration desk.

Four ISI Skaters Conquer Dance 10

by Dianne Powell

Breese Gindlesperger

Breese Gindlesperger likes a challenge. She began skating in the ISI Learn-to-Skate Program and took up ice dancing seven years ago at age 10. "I always wanted to try new things in skating, so I took a few lessons and really like the different aspects of the sport," says the 17-year-old whose home rink is Planet Ice in Johnstown, Pa.

What she likes most about ice dancing is "transforming your expression through body language to represent the style of the dance."

The most challenging aspect of ice dancing, says Breese, who trains with Coach Barbara Gahagen at Center Ice and Blades in Delmont, Pennsylvania, "was learning the dances and getting the timing right, while also portraying expression."

The most challenging part of the ISI Dance 10 Test, she adds, was the pressure. "Knowing that everything you've worked for depends on how well you can perform during this one test is nerve-wracking."

"My advice to skaters who want to try ice dancing is to take a few lessons

and see if you like it. It really is challenging, just in a different way than freestyle or pairs skating. Training in ice dancing can improve other aspects of your skating: flow, expression, presentation, edges."

Breese, who has tested up to ISI Freestyle 7 and is an ISI coach and judge, has competed locally, at ISI Worlds and in the Keystone State Games. She says the ISI testing and competition programs offer a great atmosphere for skaters to interact with each other. "Everyone is so supportive and encouraging, and always willing to help each other out."

Breese will carry her ability to deal with challenges and the self-confidence she's gained from skating with her as she enrolls at Washington and Jefferson College in Washington, Pa. as a pre-med student with a goal of becoming a pediatric oncologist.



Paige DiToppa

As one of ISI's young beginners, Paige DiToppa started skating in the ISI program when she was 3. Impressed with the dance teams at Center Ice Arena in Delmont, Pa., she took up ice dancing at the tender age of 7. Now 16, she has participated in ISI Worlds four times, earned the Worlds Good Sport award in 2010 and skated in the ISI Benefit on Ice Show the same year.

In addition to passing Dance 10, Paige — who has trained with coaches Bob Mock, Barbara Gahagen, Lance Holton and Julie Gahagen — has also achieved Freestyle 7.

She says that what she loves about ice dancing is "the connection to the music, the flow and elegance, the feeling of grace and precision." The most difficult part of her progression to Dance 10, she adds, was preparing for the test and knowing she had to impress the judges.

For Paige, working hard to pass a test or achieve competition goals and pushing her work to the performance level is challenging. "Perfection is not what brings you back to practice day after day, but perseverance is what makes you feel good to work toward your next goal," she says.

"The ISI program allows skaters to build performance skills and learn how to handle test and competition pressure."

For skaters considering trying ice dancing, Paige recommends discussing it with their coach and "once you start, never give up. The feeling of accomplishment is one of the greatest feelings in anything you do."

In the future, she hopes to attend a university that offers a collegiate skating program and to possibly major in pre-law. "I would also like to continue to participate in skating later in life, either judging or coaching."



Isadora Rose Park

Isadora Park began skating in the ISI Learn-to-Skate Program when she was in third grade. By fourth grade she was competing. She has competed twice at ISI Worlds, became a coach when she turned 16 and is an ISI bronze-level judge.

Encouraged by her coach, Robyn Bentley at First Arena in Elmira, N.Y., Isadora took up ice dancing seven years ago. "I fell in love with it from day one," says the 17-year-old.

For Isadora, "expression is a key component in ice dance. I love how you're free to express yourself. I think each skater reveals something unique and special while

they ice dance. It's like you have a secret that you're ready to share."

She finds testing to be the most challenging aspect of ice dancing. "It requires a lot of endurance and strength to get through the higher level dances. Sometimes my legs burned so bad I thought they were going to fall off; however, this challenge only made me try harder, and I succeeded in the end.

"Your mistakes are your best teachers," adds Isadora. "The only way you can grow is to learn from your mistakes and move forward. Not only does this apply to ice skating but it is also the key to success in life."

When Isadora competes in ice dance, it's not just a competition, she notes. "It's more checking out the awesome dresses and having a blast. Competitions have allowed me to make a lot of friends over the years." Her dance coach and skating partner is Andrew Beck.

In the future, Isadora hopes to attend SUNY (State University of New York) Plattsburgh with plans of becoming an orthodontist. She also plans to continue skating, coaching and having a blast on ice.

Sarah Alice Brown Bauguess

"I love dancing with a partner and doing the intricate changes of position of Dance 10 and international dances," says Sarah Bauguess, 28, who has studied ice dance for about 20 years. "I kept doing it because I knew it was good for my freestyle skating.

"Ice dancing is great for posture, power, poise, edge quality and developing good footwork. The benefits are undeniable, and the higher dance levels are extremely fun! My favorite dance is the Cha Cha Congalata."

Sarah started skating when she was 6 and entered her first competition the same year. "I didn't care how I placed. I was just having so much fun!" she remembers. "That was all it took to hook me for life. I love that ISI is all about fun and enjoyment but still allows you to be competitive."

Sarah skated through high school, perfecting her skills with coaches Gregory Fuller, Robert Unger and Larry LaBorde, with whom she trained and skated her Dance 10 test. Sarah continued to skate at the University of Delaware and then during graduate school at the University of Tennessee. She is now an assistant wellness manager at Associated Therapeutics.

As Sarah progressed toward her Dance 10 test, she found the most challenging aspect to be "the extremely deep edges of the international dances, quick footwork and maintaining power throughout."

In addition to Dance 10, Sarah has also achieved ISI Freestyle 6 and Figures 2. She has competed in more than 30 ISI competitions and nine collegiate competitions.

Sarah knew from an early age that she wanted to coach. She's now an ISI judge and referee who skates and coaches at the rink where her skating passion began — the Ice Chalet in Knoxville, Tenn.

"My goal is to continue skating and teaching for many years to come," says Sarah, an ISI gold-certified judge and referee. "My ice dancing goals are to learn all the international dances by 2013 and to pass as many of the dances as I can."

Sarah's skating is currently on hold as she and her husband await the birth of their first child in October.



Inspirational Skater Stories

We asked you to send us inspirational skating stories, and you delivered! We received so many submissions that we could not include them all in the magazine, but here are a few to inspire you this summer. Later in the year we will feature more skater stories, but next time we want to hear about your *funniest* skating-related moments, both on and off the ice. Send your funny stories to editor@skateisi.org along with your photo.



Christine of Clearwater

Christine and her twin sister Josephine were born in October 2001. They were premature, 12 inches long and each weighed 1 lb. 13 oz. After three and a half months in neonatal intensive care, they were allowed to come home. In time, Josephine was given a clean bill of health. Christine, however, was diagnosed with cerebral palsy, which affected her motor skills as well as her mental development.

When Josephine was about 3 ½ years old, she was watching figure skating on TV and asked, "Can I do that, too?" We looked up lessons at Clearwater Ice Arena, our home rink and signed her up for weSKATE group classes. She has moved up through the levels faster than we could have imagined, and has competed in many ISI events and made us very proud!

Christine watched her sister skate and wanted to try it herself. We were hesitant at first, since the doctors had told us that she may never walk without assistance, but we also decided to let her try to achieve all that she could. Her first weSKATE class did not turn out

very well. Even with a glider, she could not keep herself up and at the end of that lesson she started to cry and said in her halted speech, "No skate."

A few months went by, and Christine asked us again, "Me try?" This time we talked with the coaches and they offered to have one of the older skaters go behind Christine and help hold her up. Christine was thrilled! She was able to skate with her helpers.

More group and private lessons allowed Christine to grow stronger so that she could be on the ice all by herself. She entered her first Special Skater event and when they called her up to the podium to receive her medal, she looked down at it hanging around her neck, smiled ear to ear, held up the medal and cried out to the crowd, "I did it!"

Christine's skating ability may never reach that of her sister's, but she skates on her own now and is learning forward crossovers.

The point is, you will never find a happier skater on the rink, and her ability to inspire the crowds at skating competitions makes all of us feel on top of the world. We owe so much to all of the coaches and skaters who have helped her along the way, but especially Coach Georgia Fuller; her daughters, Lauren and Sarah; and our skating director, Sharon Cook.

—John King

For Kayla

My name is Lily Harvison. I am 12 years old and I am in Freestyle 8 at Sioux Falls Figure Skating Club in Sioux Falls, S.D. I went to ISI Worlds in Denver in 2008. I placed first in all five of my events, and I was very excited to come home and tell my family!

The day after we got home, my 21-year-old cousin Kayla was killed in a car accident. It was a very hard time for my family and I didn't know if I wanted to skate again, but my friends and family encouraged me to.

Skating is now a place for me to express my feelings. Because my cousin Kayla was a basketball coach for seventh and eighth graders,



there is a tournament for her every year. At the tournament, I got a bracelet that says "Kayla Marie, Forever In Our Hearts." I wear it every time I skate. When I get ready to do a double jump, I feel my bracelet and it gives me a great feeling. It sometimes feels like Kayla is lifting me up in my jumps. And it feels like she is pulling me around every rotation in my spins.

Kayla loved watching me skate and she always encouraged me, so I wanted to find a way to honor her through a skating program. My mom had given Kayla a dress for her 6th birthday, and my aunt had given it to me when I was 6. Even though it was a little small, I decided to find a way to wear it in a dramatic program. My coach and I found music to Dolly Parton's *Coat of Many Colors*. The patchwork coat we found went perfectly with the dress and the program. When I was doing that program I felt like Kayla was with me. When my grandparents came to watch me do the program for the first time, they were overcome with emotion. Although the judges did not know the story behind the dress, they could see it meant a lot to me. Kayla's parents watched the video and were very touched. I gave them a framed picture of me in Kayla's dress.

I am going to Worlds 2011, and I am thinking of doing the program again. The first day we will arrive at Worlds is July 24, the day that would have been Kayla's 24th birthday. Kayla will always inspire me, in skating and my life.

—Lily Harvison



Skating Grandma

Ever since I was a child, I was fascinated with the grace and power of figure skating, and I always wished that I could be one of those floating and twirling stars, gliding so effortlessly over the ice. Unfortunately it had to stay a dream, since in my home country of Peru, where I grew up and lived into my 40s, there were no ice rinks. Then I joined UNICEF and was assigned to many hardship countries, again with no ice rinks, until I retired and settled with my husband here in the U.S. Throughout the years, I have assiduously watched figure skating competitions and performances on television and followed with awe and envy the ever-rising achievements of the skaters.

Now, here in Easton, Md. on the Eastern Shore of the Chesapeake, we do have an ice rink that opens for five months during fall and winter. In January 2008 I inquired about skating lessons and enrolled in the learn-to-skate program. I got a funny look when I presented my enrollment form and was asked if it was for my grandchild. I was 61 years old and had only skated with tentative strokes a couple of times back in 1993 while on study leave in Washington, D.C.

The first day of classes I was nervous and asked my daughter to accompany me. I was in shock when I saw all the toddlers lining up for their lesson; I felt totally misplaced and was about to leave when my daughter was spotted and recognized by one of the coaches. She insisted that it was perfectly all right to learn to skate at my age, together with these kids, and encouraged me onto the ice.

So I started my lessons in the Pre-Alpha group and made my way up quickly through the ranks. I also started taking private lessons, which helped enormously to improve my skills. I had to interrupt my learning for a whole season, because by attempting to do a bunny hop I broke my left wrist and, soon thereafter, my right kneecap. Since September 2009 I have added more skating and lessons by going to the Delaware State Fair rink, which is open 10 months of the year.

In February 2010 I enrolled in "academy" lessons, where I started to learn dance movements, and in January of this year I added power skating to my curriculum. My classmates are now between the ages of 8 and 15. They accept me graciously and their mothers admire my energy and skating skills.

In Easton the ISI levels are followed, and by the end of this season I hope to be promoted to Freestyle 2, if I ever master my two-foot spin. I will be content skating at the level I have achieved so far — a dream come true!

—Monica Stecher



ICE RINK WORD SCRAMBLE

Of course there's ice, but unscramble the following words for other things you might find in an ice rink!

1. mbnoiaz _____
2. rop hops _____
3. smicu _____
4. canks arb _____
5. tho loccetoha _____
6. krocise _____
7. tranle ekasts _____
8. mupj narshes _____
9. abcsreelh _____
10. koyche kiscd _____
11. dovie mega _____
12. irshace _____
13. ramaneci gafi _____
14. cukp _____

How many words can you make using some of the letters found in

ICE SKATING INSTITUTE ?

Email your list of words along with your full name and ISI member number to editor@skateisi.org by September 15, and we'll mention the skater who came up with the most (correctly spelled) words in the winter issue of *Recreational Ice Skating!*

Can you find the 10 things that are different between these two Fourth of July pictures?



Summer is a great time to read about ice skating!

Make a trip to your local library or favorite bookstore, and you'll find books with strength and conditioning tips for skaters as well as long-time favorites like *Hans Brinker and the Silver Skates*. Or how about the life story of a famous skater, such as Peggy Fleming, Dorothy Hamill, Scott Hamilton, Michelle Kwan, Sasha Cohen or Wayne Gretsky? There are many great books for younger readers, too: look for *It's OK To Fall*, *'A' Is for Axel* or *I Really, Really Need Actual Ice Skates*.



answers

One firmwork star is missing; more stripes on shirt; little finger on right hand; more freckles on face; right ear; left skate is untied; something in pocket; star on flag filled in; skate blades; sleeves are longer.

competitions

july

- 2-3 **Paramount CA**
Paramount Iceland
Paramount Iceland's American Classic
- 2-3 **Las Vegas NV**
Las Vegas Ice Center
Red, White & Blue ISI Open Competition
- 8-10 **Blaine MN**
NSC Schwan Super Rink
2011 Summer Sizzle
- 9-10 **Evanston IL**
Robert Crown Center
34th Annual July Open
- 16 **Wilmette IL**
Centennial Ice Rinks
Mid-Summer Classic
- 23 **Bremerton WA**
Bremerton Ice Center
Summer Stars
- 23-24 **Decatur AL**
Point Mallard Ice Skating Complex
8th Annual Wind, Rain or Shine
ISI Team Competition



25-30 **Blaine MN**
Schwan Super Rink
ISI World Recreational
Team Championships

30 **Gurnee IL**
Rink Side Ice Arena
The Summer Chiller

august

- 4-7 **San Diego CA**
San Diego Ice Arena
State Games of America
- 11-14 **San Diego CA**
Ice Town-San Diego
Skate by the Sea
- 13-14 **Oxnard CA**
Channel Islands Ice Center
Summer Skatefest Open ISI
Competition 2011

- 25-28 **Honolulu HI**
Ice Palace Hawaii
Hawaiian Open
- 27-28 **Westminster CA**
The Rinks-Westminster Ice
1st Annual Westminster Ice ISI
Open Competition

september

- 16-18 **Arlington TX**
ICE at The Parks
7th Annual Open Competition
- 30-Oct. 2 **Oldsmar FL**
Tampa Bay Skating
Academy-Oldsmar
ISI Adult Championships



october

- 29-30 **Rockland MA**
Winterland Skating School
Rockland Ice Rink
Winterland Halloween Classic

december

- 2-4 **Burbank CA**
Pickwick Ice Skating Center
ISI Artistic Challenge



► 2012

february

- 17-19 **Northbrook IL**
Northbrook Sports Center
ISI Winter Classic



march



30-April 1 **St. Peters MO**
St. Peters Rec-Plex
ISI Synchronized
Championships

may



26-28 **Orlando FL**
RDV Sportsplex Ice Den
ISI Conference
Championships

shows & exhibitions

august

- 1 **Evanston IL**
Robert Crown Center
End of Summer Exhibition
- 14 **Fort Myers FL**
Fort Myers Skatium
Summer Sunations

december

- 16-17 **Simi Valley CA**
Iceoplex Simi Valley
Cinderella on Ice
- 17-Jan. 3 **Arlington TX**
ICE at The Parks
Holiday at The Parks

LEARN TO SKATE LIKE A CHAMPION!

Over 50 instructional videos available! • (888) USA - 2014

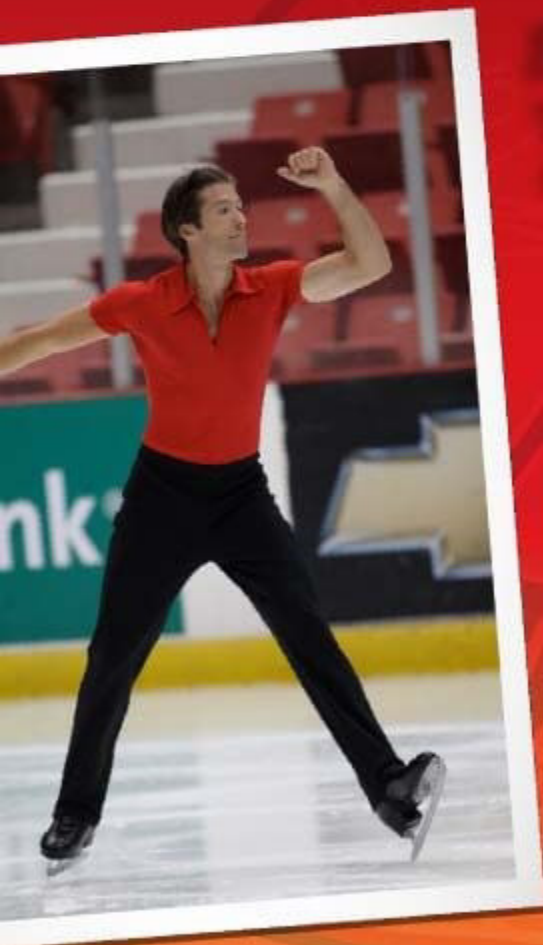
Skatetape.com

Skatetape.com The Figure Skating Video Superstore

10% off
next order

Use code: 833Q11
offer ends 8/31/11





Sept. 30 - Oct. 2
Tampa Bay Skating Academy
Oldsmar, Florida

Entry & Test Deadline: Aug. 15

TBSA-Oldsmar, Florida's first twin ice rink, knows the score when it comes to hosting big events. ISI adult skaters will love both the venue and the hot-spot location. Three of the country's top 10 beaches are just minutes away, featuring white "sugar" sand, waterside cafes and brilliant sunsets. If golf is your thing, you won't be disappointed! Tampa Bay was recently named "Top Arts Destination," and offers eclectic indoor and open-air shopping and dining in unique areas like the historic neighborhoods of Ybor City and Hyde Park. Don't miss this last chance of the year for a combination skating and beach getaway!

More Info:
skateisi.org/AdultChamps
visittampabay.com
funleaguegroup.com

For event details and entry forms...
skateisi.org/AdultChamps



Ice Skating + FUN = ISI National Events!

It All Adds Up to Skating for the FUN of It!

Six upcoming competitions — unlimited opportunities!

It's a no-brainer! ISI skaters have the most opportunities to compete in a wide variety of events and in a fun, welcoming environment.

July 25-30, 2011

NSC Schwan Super Rink
Blaine, MN
Presented by Twin Cities Gateway
Entry & Test
Deadline:
May 1, 2011



Sept. 30-Oct. 2, 2011

Tampa Bay Skating
Academy-Oldsmar
Oldsmar, FL
Entry & Test
Deadline:
Aug. 15, 2011



December 2-4, 2011

Pickwick Ice Skating
Center
Burbank, CA
Entry & Test
Deadline:
Oct. 15, 2011



Feb. 17-19, 2012

Northbrook Sports Center
Northbrook, IL
Entry & Test
Deadline:
Dec. 1, 2011



Mar. 30-Apr. 1, 2012

St. Peters Rec-Plex
St. Peters, MO
Entry & Test
Deadline:
Feb. 1, 2012



May 26-28, 2012

RDV Sportsplex Ice Den
Orlando, FL
Entry & Test
Deadline:
March 1, 2012



Go to skateisi.org for entry forms and additional event details.

