

recreational
IceSkating
Summer 2012

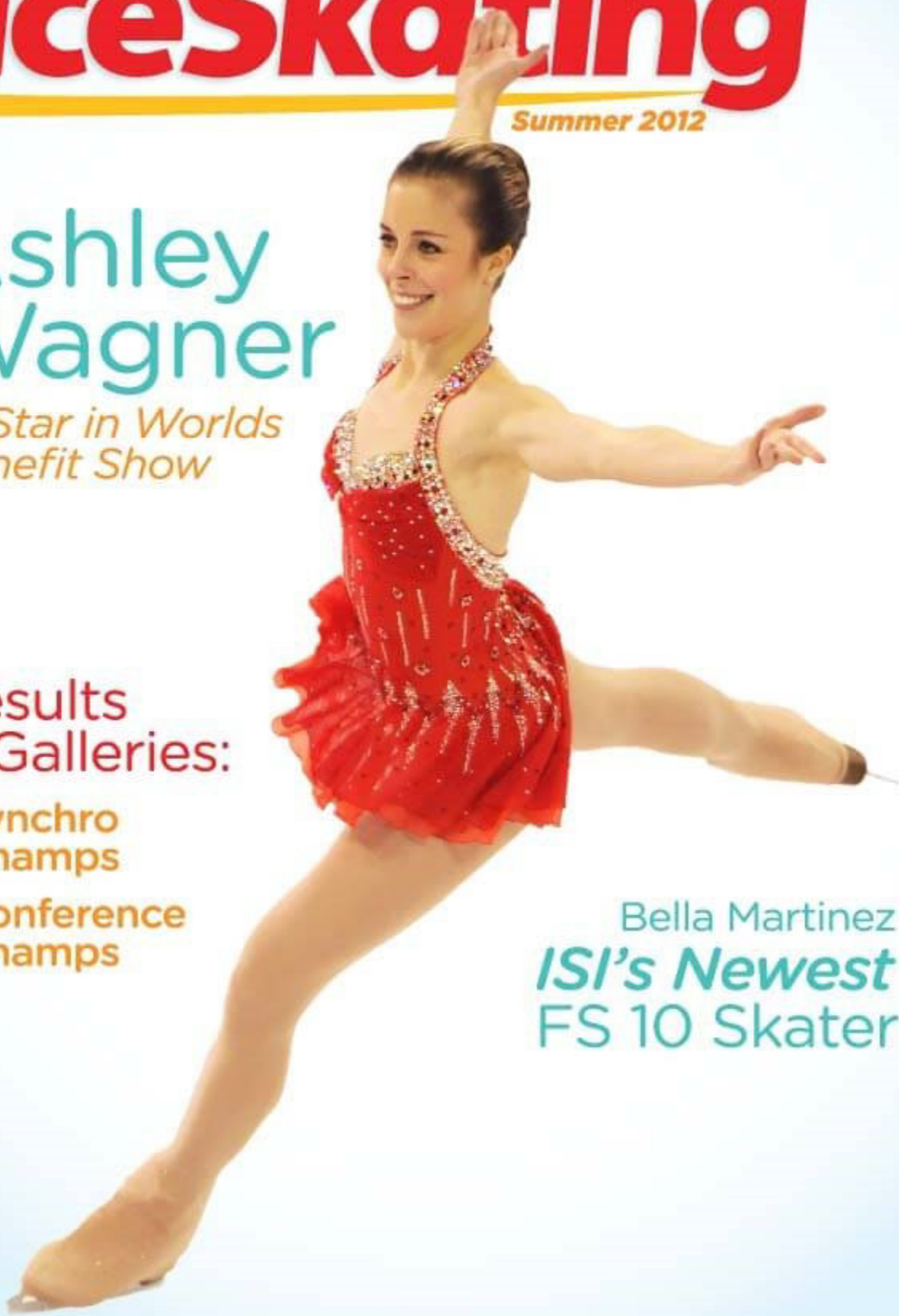
Ashley
Wagner

*to Star in Worlds
Benefit Show*

Results
& Galleries:

- Synchro
Champs
- Conference
Champs

Bella Martinez
ISI's Newest
FS 10 Skater



Don't Miss Benefit on Ice

Starring Ashley Wagner

**Reserve your seat now for
the highlight of Worlds week!**

The ISIA Education Foundation is pleased to present Ashley Wagner, 2012 U.S. national champion, as the featured skater at this year's Benefit on Ice Show. Besides having the unique opportunity to see a live performance by a national champion, you'll also get to meet Ashley after the show during an autograph session!

The Benefit Show scouting team will be observing Worlds competitors at all levels throughout the week, selecting participants to join in the Friday night ice skating extravaganza.

Be sure to buy your Skate with the Stars raffle tickets (\$5 each, or five for \$20) at Worlds for an extra chance to perform in the show. The lucky drawing winners will be announced at the Roundup at the Ranch competitors' party on Wednesday night.

If you're selected, you'll have the unique privilege of sharing the program spotlight with ISI peers as well as Ashley Wagner.

Whether you're on the ice or in the stands, this year's Benefit on Ice will be an evening you won't forget!



Ashley Wagner, 2012 U.S. National Champion
Leah Adams Photography

FRIDAY, JULY 27 • 7 P.M. • DR PEPPER ARENA • FRISCO, TEXAS

Seating is limited. Reserve your tickets now!

\$20 before July 15, **\$25** at Worlds registration prior to Benefit Show
\$15 group sales (10 or more tickets through the ISI office prior to July 15)



Payment Method:

- Check/money order*
 VISA
 MasterCard
 Discover

Make checks payable to
Ice Skating Institute.

Mail form and payment to:
ISI-Events
6000 Custer Rd., Building 9
Plano, TX 75023

Number of tickets _____ Total \$ _____

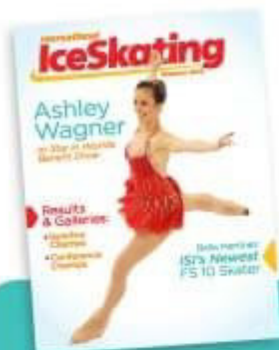
Name for ticket pickup at registration _____

Credit card # _____ Exp. Date _____

Billing address _____

Cardholder's name _____ Telephone (required) _____

Signature _____



Ashley Wagner
Leah Adams Photography

what's inside

Recreational Ice Skating | Summer 2012 | Vol. 36, Number 3

▶ features

Publisher
Ice Skating Institute

Editor
Lori Fairchild

Editorial Advisors
Peter Martell
Randy Winship
Sean Flynn

**Print Production &
Advertising/Sponsorship
Manager**
Carol Jackson

Graphic Designer
Dallas Drotz



The Joy of Being Bella..... 6
ISI's Newest FS 10 Skater
by Lori Fairchild

Conference Champs Report..... 8

**Conference Championships Gallery
& Results..... 10**



**Synchronized Championships
Report..... 13**

Synchro Champs Results..... 14

Synchro Champs Gallery..... 16

Holiday Challenge Debuts in Danbury... 19

**ISIA Education Foundation Scholarship
Winners & Donations..... 24**

Ice Poets..... 26



Recreational Ice Skating ISSN 0164-4106 (USPS 361-570) is published quarterly; Fall, Winter, Spring, and Summer; by the Ice Skating Institute, 6000 Custer Rd., Bldg. 9, Plano, TX 75023. Periodicals postage paid at Plano, TX, and at additional mailing offices. POSTMASTER: Send address changes to Recreational Ice Skating, 6000 Custer Rd., Bldg. 9, Plano, TX 75023. Printed in the U.S.A.

Extra copies are \$4.00 each (includes postage).

©2012 by the Ice Skating Institute. Reproduction in whole or in part is prohibited unless expressly authorized in writing by publisher. All rights reserved. Opinions expressed by contributors do not necessarily represent the views of the Ice Skating Institute, the publisher or the advertisers. Submissions of manuscripts, materials, photographs, and artwork are made at mailer's risk and must include self-addressed envelope with sufficient postage for return. No responsibility will be assumed for unsolicited materials. ISI reserves the right to edit material submitted for content and space consideration.

▶ departments

News & Notes 4

Competitors' Corner 20

Focus on Footwork..... 22

**weSKATE Kids Adventures
& Activities..... 28**

Calendar 30

Dedicated to providing leadership, education and services to the ice skating industry.

ICE SKATING INSTITUTE
6000 Custer Rd., Bldg. 9
Plano, TX 75023
Phone: (972) 735-8800
Fax: (972) 735-8815
e-mail: isi@skateisi.org
www.skateisi.org

ISI INTERNATIONAL HEADQUARTERS

Executive Director

Peter Martell

Director of Skating Programs & Events

Randy Winship

Director of Management Programs & Services

Sean Flynn

Controller

Donna Crooks

Assistant Controller

Robert Dumar

Membership Coordinator

Mary Ann Mangano

Print Production & Advertising/Sponsorship Manager

Carol Jackson

Information Services Coordinator

Jeff Anderson

Administrative Assistant

Angela Tooley

ISI OFFICERS

President	Jim Hartnett
1st Vice President	Mike Palkin
2nd Vice President	Janice Forbes
Treasurer	Rob McBride
Secretary	Margy Bennett
Immediate Past President	Jim Lange

DIRECTORS

District 1	Tiesha Potvin-Coale
District 2	Robyn Bentley
District 3	Lisa Fedick
District 4	Christine Wilson Brinton
District 5	Larry LaBorde
District 6	Jodi Truel
District 7	Jamie Baringer
District 8	Susan D'Aquila
District 9	Heather Hyatt
District 10	Jane Schaber
District 11	Caroline Baker
District 12	Debbie Lane
District 13	Allison Miller
District 14	Paige Scott
District 15	Darlene Sparks
District 16	Cindy Solberg
District 18	Glyn Jones
Builders & Suppliers	Doug Peters
Instructors	Shane Douglas
Commercial Facilities	Jon Gustafson
Public/Not-for-Profit Facilities	Sara Bolan
Schools/Colleges/Universities	Alane Swiderski
IAIM Chair	Kevin McCormack
PSA Representative	Gerry Lane
USFSA Representative	Homer Hagedorn
ISIA/Asia Representative	Paul Wong
PPIRMC Representative	Trudy Ivory
MIAMA Representative	Dean Mulso
MIRMA Representative	Judy Sniffen
Education Foundation	Don Bartelson
Lifetime Honorary Member	Carol Ziziebka

► news & notes

What's going on at your home ice arena, or with your skating club or team?
Send your news and notes to editor@skateisi.org.

Ice Chalet Seeks Former Skaters for 50th Anniversary Celebration



If you ever skated at the Ice Chalet in Knoxville, Tenn., you know it is a special place filled with half a century of wonderful memories.

On July 21, the Ice Chalet will kick off a yearlong celebration of its 50th anniversary with "A Celebration and Reunion" featuring on-ice dancing to the tunes of the past and an outdoor dinner gathering.

The Ice Chalet was one of the first two skating rinks in the South to offer regularly scheduled public sessions. A year after the rink opened, a German skating professional named Robert Unger happened to visit Knoxville while on tour with Holiday On Ice, and he decided to stay and make the town and its new Ice Chalet his new home. He established the renowned Robert Unger School of Ice Skating and was instrumental in the development of the testing standards still in use by the Ice Skating Institute. The Ice Chalet also was home to one of the first ISI-endorsed recreational ice skating competitions.

Many Ice Chalet students and teachers have achieved individual success in the skating world as competitors, performers and instructors.

The facility has been updated through the years but retains its chalet-style charm. The mirror ball is still at center ice, the fireplace still burns real wood and the mural on the wall still welcomes visitors.

Details about the 50th Anniversary celebration as well as links to a Facebook discussion group, an online photo scrapbook and souvenir items are available on the Ice Chalet's website at chaleticerinks.com/50thanniversary.htm.

Share Your Pen Pal Story



Hundreds of ISI members have connected with other skaters through the ISI pen pal program. If you have participated in the program, please share your pen pal experiences with us.

How many pen pals have you communicated with? Did they live near you, or far away? Have you made any long-term skater friends? Learned helpful skating tips from them? Met any of your pen pals in person at an ISI competition? Send your pen pal stories to editor@skateisi.org.

If you want to be a pen pal, go to the skaters' page at skateisi.org and click on the Pen Pal button.

ECLIPSE EXPECTATIONS

NEW Eclipse Blades give you the edge you've been seeking.

We've improved tradition with state-of-the-art technology to create the ideal blade for today's skater.

Eclipse Blades' undisputable beauty & superior design deliver strength and precision that will help you **eclipse expectations.**

It's quite simply, **a better blade.**

Full Silver Welds offer strength and beauty.

1075 High Carbon Steel combines strength and resilience.

Impeccable Plating creates a beautiful finish.

Heat Tempering gives edges long life.

Automated Chrome Relief provides more consistent edges.

Chrome Relief Rakes allow secure ice engagement.

ECLIPSE
BLADES™



Visit your Authorized Riedell Dealer to experience Eclipse.

EclipseBlades.com





ActionPhotos.com

The Joy of Being Bella

by Lori Fairchild

It's almost impossible to hear the name "Bella Martinez" and not smile. That's the effect this 17-year-old has on those who have met her — her sunny outlook, exuberant expressions, personal discipline and extraordinary talent all contribute to the joy that she brings to everything she does, on the ice and off. It doesn't hurt that she has a happy, lyrical name that seems to have been created just for her.

Much to the delight of the ISI judging panel, Bella's signature exuberance and stunning discipline were on full display during her ISI Freestyle 10 test in Burbank, Calif. last December during the Artistic Challenge competition. It was without hesitation that the judges pronounced her only the 30th skater worldwide to master the rigorous requirements of the FS 10 test.

"Bella did not merely want to pass the test," says Jayne Throckmorton, her coach of more than 10 years. "She wanted to excel at it. She set very high standards for herself, and getting every element up to her standards took a lot of time and effort. But Bella has always set her standards high. Even as a much younger skater, she allocated 15 minutes a day to practicing jumps in the opposite direction, with the FS 10 test in mind. That work has advanced her skill in other areas, allowing her to combine complex moves in the opposite direction in her competitive repertoire."

Not surprisingly, Coach Throckmorton describes Bella as "a joy to coach," adding that the teen is passionate and determined, arriving at her home rink of Skatetown in Roseville, Calif. each morning at 5 a.m., ready to make every minute count. After three hours on the ice, she's off to school at Roseville Academy of Math, Science and Engineering, where she will be a senior this year. Then she's back at Skatetown for more practice before heading home for homework, family time and an early lights-out.

Bella first set foot on the ice at age 3 1/2, when an ice rink employee invited her to help him bring in the cones at closing

time during a family visit to Squaw Valley. He and her parents were stunned at her natural balance and seemingly instant love of the surface — but after all, she had been telling them for over a year that she was going to be an ice skater when she was "a big girl."

That feisty toddler did, indeed, become an ice skater as she grew up, and an accomplished one, as well. Passing FS 10 was a personal goal for as long as she can remember. "Once I was old enough to understand that FS 10 was the top of the ISI ladder — the most prestigious of all ISI Freestyle tests — I knew that I would work toward this goal until I was ready to take the test. I absolutely love doing three butterflies in a row, and I found that the Axels in both directions were really fun, once I got the hang of it. Believe it or not, it was the death drop that gave me the greatest challenge. I had to work for a long time on that one!"

Bella has participated in two ISI Worlds competitions, in 2005 and 2009, and as ISI's newest FS 10 skater, has been invited to perform in this year's Benefit On Ice show at Worlds in Dallas.

"There are so many advantages and benefits to ISI membership," says Bella. "ISI competitions are filled with fun, friends, artistry and absolutely no stress — I love it! Being a member of ISI gives you lots of opportunities to earn unique skills and be rewarded for your hard work by passing the next test."

In addition to her achievements in the ISI program, Bella also competes in U.S. Figure Skating's Senior Ladies division, in which she has placed third at regionals and qualified for sectionals.

She and her parents and two younger brothers are a close-knit, supportive family who enjoy outdoor activities together. Bella is a voracious reader and aspiring writer who plans to study journalism and child psychology in college.

"But no matter what, skating will always be a very big part of my life," she notes. "When I step on the ice, I feel free and light, and the possibilities are endless. Skating is magical for me, and I love everything about it!" **ISI**



Coach Jayne Throckmorton, FS 10 skater Bella Martinez and ISI testing judge Carrie Clarke
ActionPhotos.com

NEW!
Summer
Sport Inserts
Available Now!



Wheels that flash. Ready, game on. . Tons of custom combos. And yes, a built-in seat.



Orbz



Union Jack



Sweethearts



*Splash

*Featuring Splash, the winning design of our "Color me ZUCA 2011" contest.



Team Champions TBSA-Countryside
Gabriele Photography

TBSA-Countryside Tops at 2012 Conference Champs

History repeated itself on May 28, when Tampa Bay Skating Academy-Countryside was once again named the team champion of the ISI Conference Championships at RDV Sportsplex Ice Den in Orlando. The same team took the same honors three years ago at the very first Conference Champs — also hosted at RDV Sportsplex Ice Den. That year, TBSA-Countryside won an unprecedented three of the six ISI national events, and they've taken home numerous trophies both before and since.

"Many thanks to the always organized and efficient staff at RDV, who were on top of everything all weekend long. It was a pleasure to have our competition there again this year," said Randy Winship, ISI director of skating programs and events.

The Memorial Day weekend event featured 431 competitors from 13 states, including California and Alaska.



The enthusiastic team from Bowie Ice Arena in Maryland traveled 16 hours by bus, passing the time with photo scavenger hunts, a pajama fashion show and movies.

Timmy Chapman and Taylor Nordquist, both from the host facility, were the first-ever Open Pair competitors for an ISI national event. Timmy also competed in 21 other events, setting an ISI participation record for a single competition.

The incredible, creative team of adult skaters from Ellenton Ice & Sports Complex never disappoint — they keep coming up with new and exciting group numbers, and this year was no exception.

Those were just a few of the highlights of the third ISI Conference Championships. There will be no Conference Champs in 2013, but you'll still have five other national competitions to choose from, and we hope to see you in at least one of them! **RIS**

SP-Teri



ZERO GRAVITY LICENSE TO FLY

The latest light weight skating boots.

Standard Features:
V notch for optimal ankle flex.
Low cut back for ideal toe pointing and better Achilles comfort.
Cushioned insole for shock absorption with anti friction top cover.
Suede synthetic lining to wick moisture from feet and ankle comfort.

Available at a SP-Teri dealer near you.

SP-Teri Co., Inc. 436 North Canal Street, Unit 1 • South San Francisco, CA 94080
Phone (650) 871-1715 • Fax (650) 871-9062 • www.spteri.com

ONLY current ISI members can:

3 renewal
choices
and They're
All Winners!

GOOD \$15
1 membership term
(thru August 2013)

BETTER \$25 SAVE \$5!
2 membership terms
(thru August 2014)

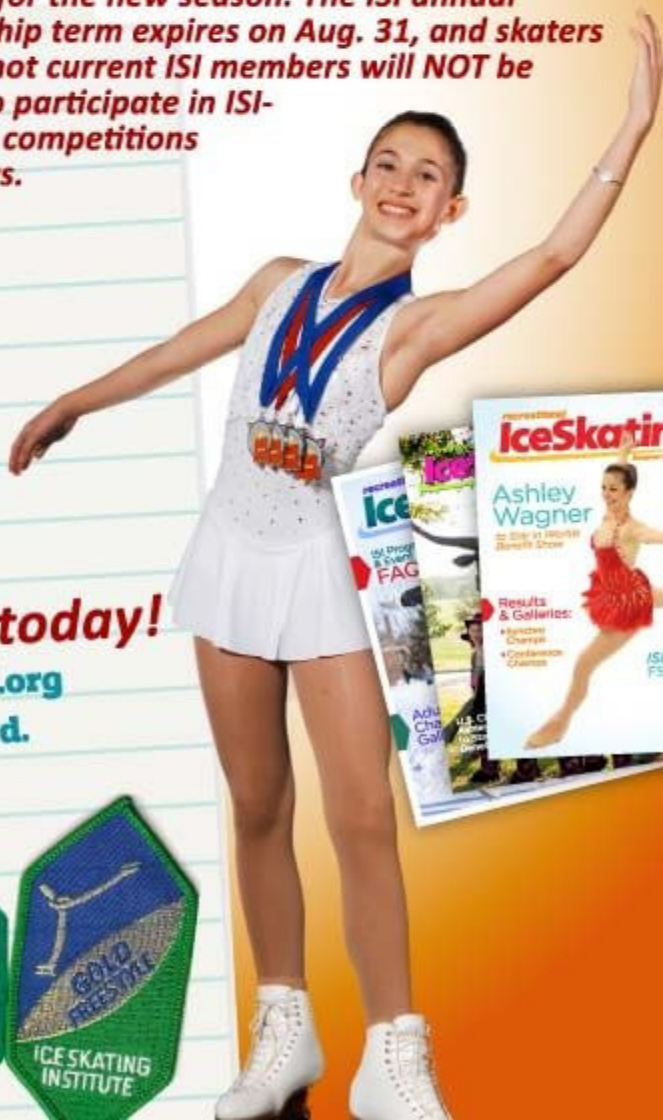
BEST \$50 SAVE \$25!!!
5 membership terms
(thru August 2017)

Don't delay, renew online today!

It's fast and easy at www.skateisi.org
or mail in the attached postcard.

- Enter local, district and national ISI competitions and shows
- Receive *Recreational Ice Skating* magazine
- Register tests
- Receive excess accident insurance coverage

Be ready for the new season. The ISI annual membership term expires on Aug. 31, and skaters who are not current ISI members will NOT be eligible to participate in ISI-endorsed competitions and shows.



*Professional on-ice photography by Gabriele Photography
 Submitted photos courtesy of Conference Champs participants*

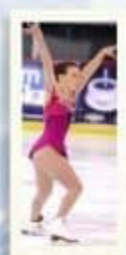


TOP 10

PLACE	TEAM	TOTAL POINTS
1	Tampa Bay Skating Academy-Countryside	1443.5
2	RDV Sportsplex Ice Den	1328.5
3	City of Bowie Ice Arena	649.5
4	Ice Sports Forum	571.5
5	Clearwater Ice Arena	334.5
6	Tampa Bay Skating Academy-Oldsmar	230.5
7	Ellenton Ice & Sports Complex	171.0
8	Planet Ice	149.5
9	Herbert Wells Ice Rink	114.0
10	Skating Club of Greater Youngstown	93.0

For complete list of teams and results, go to skateisi.org/ConferenceChamps

NCE CHAMPS GALLERY





Scoot Your Boots to

Roundup at the Ranch!

Saddle up for an evening of Texas-style fun, food and friendship at a local dude ranch, hosted exclusively for ISI Worlds participants and their families!

Your ticket will include a Texas-style barbeque supper and hours of indoor and outdoor activities, including line dancing to the tunes of a Texas DJ. You can also participate in the Parade of Skaters, try your hand at live armadillo racing, compete at horseshoes, cool off in the pool or ride a mechanical bull!

This is one shindig you won't want to miss! Be sure to order your tickets from the ISI office by July 15 for advance reservations and pricing. (Tickets will be available at Worlds registration desk for an additional \$5 per ticket.)



Roundup at the Ranch
Austin Ranch
Grapevine, Texas
Wednesday, July 25
6:30-10:30 p.m.

Buses load
at 5:30 p.m.

Advance tickets (by July 15):

___ \$39 age 13 and up

___ \$34 age 5-12

___ \$20 children under 5

Round-trip bus transportation:

___ @ \$10 per person

Payment Method:

Check/money order*

VISA

MasterCard

Discover

Make checks payable to
Ice Skating Institute.

Mail form and payment to:
ISI-Events

6000 Custer Rd., Building 9
Plano, TX 75023

PAYMENT TYPE (circle one) Check VISA MasterCard Discover TOTAL \$ _____

Credit card number _____ Exp. Date _____

Name on Card (please print) _____

Credit Card Billing Address _____

Cardholder Signature _____ Phone _____

(OPTIONAL) ISIA Education Foundation Donation (tax deductible IRS# 36-3638131) \$ _____

Advance ticket orders must be received in the ISI office by July 15.

Please pick up your tickets at the ISI Worlds registration desk.

Barbra Wietector (front left) and ISI Executive Director Peter Martell (right) present the Boyd Wietector Trophy to the Synergy team from Webster Groves Ice Arena.



Kevin Devine Photography

2012 Synchronized Champs Features 3rd Annual Showcase

Jason Cohn of St. Louis performed a special Novice program in the 3rd Annual Synchro Showcase.



Nearly 1,000 spectators watched and cheered during the 3rd Annual Synchro Showcase exhibition on March 31 during Synchronized Championships in St. Peters, Mo. Teams were invited to skate based on being part of this year's Fun Facts in the Synchro Champs program book. Other variety performances included Couples Spotlight, Family Spotlight, Team Compulsories and Production. A special Novice program was performed by St. Louis skater Jason Cohn.

The Rec-Plex proved once again that its top-notch, efficient staff and spacious facility make it a great place for an ISI national event.

Congratulations to the Synergy team from Webster Groves Ice arena, winners of the Boyd Wietector Trophy. Barbra Wietector presented the trophy named for her late husband, a beloved ISI event announcer and former president of both the ISI board of directors and the ISIA Education Foundation.

Next year's Synchronized Championships is set for April 12-14 at Schwan Super Rink in Blaine, Minn.

RIE



Check out the **ALL NEW**

 **Ice Skating Institute** Apparel store!
www.FineDesigns.com/isi



Performance Tee + customize logos and colors
Performance Long + customize logos and colors
Embroidered Fleece Jacket
Embroidered Fleece Vest

Limited time offer of

10% off

coupon code:
ISI2012

Expires August 31, 2012


Ice Skating Institute





16TH ANNUAL ISI SYNCHRONIZED CHAMPIONSHIPS

St. Peters Rec-Plex | St. Peters, Mo. | March 30-April 1

FINAL ROUND EVENT RESULTS

For a complete list of results, go to www.skateisi.org/synchro

COMPULSORY TEAMS

Jr Youth Formation Compulsory

- 1 Texas All Stars Dr Pepper StarCenter McKinney

Sr. Youth Formation Compulsory

- 1 Arctic Snowflakes Lou & Gib Reese Ice Arena

Youth Skating Compulsory

- 1 Synchro St. Louis Onyx Ice City of St. Peters Rec-Plex
2 Texas All Stars Dr Pepper StarCenter McKinney
3 Team Chiller Chiller LLC-Easton

Sr. Youth Skating Compulsory

- 1 Synchro St. Louis Ice Gems City of St. Peters Rec-Plex
2 Synergy Webster Groves Ice Arena
3 Silver Blade Brigade Wayne C. Kennedy Recreation Complex
4 Teach Chiller Chiller LLC-Easton

Teen Skating Compulsory

- 1 Synchro St. Louis Diamond Edges City of St. Peters Rec-Plex
2 Gold Blade Brigade Wayne C. Kennedy Recreation Complex

FORMATION TEAMS

Tot Formation

- 1 Precicettes Center Ice of DuPage
2 Synergy Webster Groves Ice Arena
3 Jr. Basic Blade Brigade Wayne C. Kennedy Recreation Complex

Jr. Youth Formation – Small

- 1 Fusion Toyota Sports Center
2 Revolution Carlson Ice Arena
3 Extreme Rick Side Ice Arena
4 Texas All Stars Dr Pepper StarCenter McKinney
5 Dazzlers Downers Grove Ice Arena
6 Fleur de Lis Minis Brentwood Ice Arena
6 Pleasant Prairie Patriettes RecPlex Ice Arena

Jr. Youth Formation – Large

- 1 Chicago Skates McFetridge Sports Center
2 Teams Elite Northbrook Sports Center

Youth Formation – Small

- 1 Dazzlers Downers Grove Ice Arena
2 Synchro St. Louis Emerald Blades City of St. Peters Rec-Plex
3 Revolution Carlson Ice Arena
4 32 Degrees US Ice Sports Complex

Youth Formation – Large

- 1 Teams Elite Northbrook Sports Center
2 Mini Blades Glenview Ice Center
3 Silver Leafs Leafs Ice Centre
4 Precicettes Center Ice of DuPage
5 Basic Blade Brigade Wayne C. Kennedy Recreation Complex

Sr. Youth Formation

- 1 Synchro St. Louis Ruby Edge City of St. Peters Rec-Plex
2 Arctic Snowflakes Lou & Gib Reese Ice Arena

Jr. Youth Advanced Formation

- 1 Kansas City Illusion Line Creek Ice Arena
2 Extreme Rink Side Ice Arena
3 Synergy Webster Groves Ice Arena
4 Pleasant Prairie Patriettes RecPlex Ice Arena





Youth Advanced Formation

- 1 Texas All Stars
- 2 Ice Cubes
- 3 Team Chiller

Dr Pepper StarCenter McKinney
University of Illinois Ice Arena
Chiller LLC-Easton



Master Advanced Formation

- 1 Synchro Belles
- 2 Kettering Ice Kadettes

Alpine Ice Arena
Kettering Adult Figure Skating Club

SKATING TEAMS

Jr. Youth Skating

- 1 Arctic Blaze
- 2 Sapphire Jewels

Arctic Ice Arena
Robert Crown Center



Youth Skating Select

- 1 Teams Elite
- 2 Arctic Blaze
- 3 Chicago Skates
- 4 St. Louis Fleur de Lis
- 5 Ruby Jewels
- 6 Bloomington Blades

Northbrook Sports Center
Arctic Ice Arena
McFetridge Sports Center
Brentwood Ice Arena
Robert Crown Center
Pepsi Ice Center



Youth Skating Premier

- 1 Silver Leafs
- 2 Synergy
- 3 Starr Blades
- 4 Fusion
- 5 Kansas City Illusion
- 6 Capital Classics
- 6 Dazzlers

Leafs Ice Centre
Webster Groves Ice Arena
Franklin Park Ice Arena
Toyota Sports Center
Line Creek Ice Arena
Washington Park Ice Arena
Downers Grove Ice Arena



Sr. Youth Skating Select

- 1 Junior Blades
- 2 Silver Blade Brigade
- 3 Dazzlers
- 4 Pleasant Prairie Patriotettes
- 5 Precicettes
- 6 Bloomington Blades
- 6 Team Chiller

Glenview Ice Center
Wayne C. Kennedy Recreation Complex
Downers Grove Ice Arena
RecPlex Ice Arena
Center Ice of DuPage
Pepsi Ice Center
Chiller LLC-Easton



Sr. Youth Skating Premier

- 1 Synergy
- 2 Kansas City Illusion
- 3 Synchro St. Louis Ice Gems
- 4 St. Louis Fleur de Lis
- 5 Capital Classics
- 6 Silver Leafs
- 6 South Suburban Stars
- 6 Synchro St. Louis Jade Blades

Webster Groves Ice Arena
Line Creek Ice Arena
St. Peters Rec-Plex
Brentwood Ice Arena
Washington Park Ice Arena
Leafs Ice Centre
South Suburban Ice Arena
City of St. Peters Rec-Plex



Teen Skating Premier

- 1 Synergy
- 2 Synchro St. Louis Diamond Edges
- 3 Capital Classics
- 4 Gold Blade Brigade

Webster Groves Ice Arena
City of St. Peters Rec-Plex
Washington Park Ice Arena
Wayne C. Kennedy Recreation Complex

Collegiate Skating

- 1 Lindenwood University Synchro

Lindenwood University

Adult Skating

- 1 Revolution 1
- 2 Revolution 2
- 3 Last Call

Carlson Ice Arena
Carlson Ice Arena
US Ice Sports Complex



Master Skating

- 1 La Furia
- 2 Kettering Ice Kadettes
- 3 Radiance on Ice

Ice Center @ The Promenade
Kettering Adult Figure Skating Club
Seven Bridges Ice Arena





2012 ISI SYNCHRONIZ

Kevin Devine Photography



ED CHAMPIONSHIPS GALLERY





**'Tis the Season
for Joyful Skating!**

November 30-December 2, 2012

Entry & Test Deadline: October 1, 2012

**Danbury Ice Arena
Danbury, CT**

*Replaces Artistic Challenge

skateisi.org/holidaychallenge



Holiday Challenge Debuts in Danbury

The newest ISI national competition, Holiday Challenge, will be introduced Nov. 30-Dec. 2 in Danbury, Conn. This competition replaces Artistic Challenge and includes all ISI competition events — both technical and non-technical — including the popular new Open Freestyle events. These expanded event offerings mean there is truly something for everyone at Holiday Challenge.

The competition will be held at Danbury Ice Arena, a two-sheet facility located just 70 miles north of New York City. What better time to visit the Big Apple than the holiday season? Great shopping, the Radio City Christmas Spectacular and the world-famous Rockefeller Center Christmas tree are just a few of the attractions you can reach within 60-90 minutes by bus, train or car.

In addition, Danbury is just 45 minutes from West Point, 60 minutes from the renowned Woodbury Commons outlet mall, and close to many top northeastern colleges and universities for those interested in campus tours.

Now's the time to start planning to be a part of this brand new national competition. Entry and test deadline is Oct. 1. **ISI**

For more information:
skateisi.org/holidaychallenge



@IceSkatingISI
#ISIHoliday

Riedell
RiedellSkates.com

*Perfecto
Parfait
Perfekt
Perfect*

**375
Gold Star
Classic**

Any way you say it, Riedell and Eclipse are the **perfect** combination to hit the ice.

Transform your skating with Riedell's 375 Gold Star Classic and the Eclipse Infinity.

*Made in North America
Worn around the World*

**ECLIPSE
BLADES™**
EclipseBlades.com

©2012 Riedell Shoes, Inc.



competitors' corner

BY RANDY WINSHIP | ISI Director of Skating Programs & Events

GR8 SK8ing – Have you seen it, too?

We've seen some great skating over the past few months at our Winter Classic, Synchronized Championships and Conference Championships events. If you weren't able to attend one of those national events, I'm sure you have also seen some great skating in your own area during this competition season. I'm always amazed at the overwhelming enthusiasm and support that all participating ISI skaters, coaches and parents have during all of our national competition events.

I know it will be another "Wonderful Week of Worlds" in Dallas for our upcoming 32nd Annual ISI World Team Championships in July! Be sure to check out the Worlds page on our website (skateisi.org) for all the latest updates, including the event schedule. Polish your programs so you'll have plenty of time to attend all of the exciting events planned in Dallas!

Our opening ceremony on Wednesday night will be held at a local dude ranch, complete with a barbeque supper and lots of indoor and outdoor fun. Bring your team banner and your Texas spirit!

Reserve your spot now for the John Nicks and Ashley Wagner clinics on Friday. Space is limited and they are filling up fast!

As always, the "crown jewel" of the week will be the annual ISIA Education Foundation Benefit Show on Friday

night featuring the current U.S. National Ladies Champion, Ashley Wagner.

Details and registration for each of these Worlds activities are available in this issue and on the website.

If you can't make it to Worlds this year, there will be another ISI local, district or national event coming to your area soon.

Adult skaters should make plans for the annual ISI Adult Championships event before the Aug. 10 entry and testing deadline. Grab your skating friends and make your plans now for another fun holiday weekend in fabulous Las Vegas.

How about a special new event to kick off the holiday season? Plan to join our first-ever Holiday Challenge competition (which replaces Artistic Challenge and now offers all ISI events) Nov. 30-Dec. 2 in Danbury, Conn. Entries and tests are due by Oct. 1. Why not try one of the newer ISI national events like Open Freestyle, Rhythmic Skating (with a ball, hoop or ribbon prop) or Ensemble (a "small group" event similar to production team for 4-7 skaters)? All national event descriptions are listed on the ISI website.

Summer might mean a break from school and time for vacations, but many skaters find that the local ice rink is the coolest place in town during the hot summer months! Have fun with your skating friends while you make your time on the ice really count this summer. You can even get a head start on your new skating levels, music, programs and costumes for the next skating season! **GR8**

Learn from the Coach of Champions!



Don't miss this once-in-a-lifetime opportunity to participate in a clinic conducted by legendary World and Olympic coach John Nicks, featuring his current student, U.S. Champion Ashley Wagner.

John Nicks, a World Pair Skating Champion, is among the top figure skating coaches in the world. His students have included such champions as Peggy Fleming, Tiffany Chin, Sasha Cohen, Naomi Nari Nam and Ashley Wagner, as well as pair skaters Tai Babilonia and Randy Gardner, JoJo Starbuck and Ken Shelley, and Jenny Meno and Todd Sand.

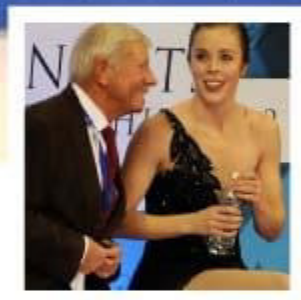
Mr. Nicks will conduct clinics on the morning of Friday, July 27 during the ISI World Team Championships, exclusively for Worlds competitors. The clinics, which will feature 2012 U.S. Champion Ashley Wagner, will focus on technical tips to improve your jumps and spins, with sessions divided by ISI test level. Each skater may participate in only one session, based on your highest test passed.

You must be entered in at least one event of the ISI World Team Championships to participate in the clinic. Participants will receive an autographed photo from Ashley Wagner at the conclusion of their session.

Worlds Clinic with
Ashley Wagner &
Coach John Nicks

Friday, July 27

Dr Pepper Arena-Frisco



Leah Adams
Photography

Check ONE:

- 9-9:45 a.m. Freestyle 4 skaters only
 10-10:45 a.m. Freestyle 5 & Silver Freestyle skaters only
 11-11:45 a.m. Freestyle 6-7 & Gold Freestyle skaters only
 Noon-12:45 p.m. Freestyle 8-10 & Platinum Freestyle skaters only

NOTE: Session levels will be combined if necessary.

\$45 Check/Money Order* Visa MasterCard Discover

**Payable to Ice Skating Institute*

SKATER'S NAME _____

CREDIT CARD NUMBER _____ EXP DATE _____

BILLING ADDRESS _____

CARDHOLDER'S NAME _____ TELEPHONE _____
(required)

EMAIL _____ SIGNATURE _____

Fax form to
972.735.8815 or
mail form with
payment to:

ISI-Events
6000 Custer Rd.,
Building 9
Plano, TX 75023



Focus On

Footwork!

Fabulous feet and exciting energy are important ingredients for a great Footwork program

Who can do Footwork events: Footwork events are open to all skaters in Freestyle 1 level and higher.

Note of clarification: Many skaters (and some coaches, too) use the term “footwork” to describe the required dance step sequences in our ISI Freestyle tests, but they are not the same thing.

Dance step sequences (for Freestyle test levels) require strong edges, turns and flow to complete a required pattern of steps. The dance step sequence requirement scores as much as any required jump or spin in each freestyle level. It is even possible to win or lose a freestyle competition event by the quality of your dance step sequence.

Some parts from those required dance step sequences can be incorporated into a Footwork program, *but you should not use the entire dance step sequence in your Footwork program.* You must use variety to create a unique footwork program routine. Footwork in a freestyle program would include the connecting steps, turns and edges placed between other skating maneuvers like jumps and spins.

Tips for a “winning” program: Most Footwork program music is peppy — but it doesn’t have to be. Be creative and come up with the best program for you to fit the specific judging criteria below.

The main emphasis for all Footwork programs should be using correct turns and edges, flow, music interpretation and general overall. Special energetic choreography that fits the music and can get the crowd going to “bring down the house” is always a big plus!

The best thing: Like Spotlight and Artistic programs, you can use the same Footwork program for more than one Freestyle test level. You don’t need to get a new program every time your test level changes, so you can save some money by using the same music and costume for several competitions throughout the year. Of course,

with your coach’s help and advice, you can always change the choreography in your routine between competitions as your skill level improves.

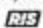
Some skaters (especially adults) think the best thing about a footwork program is that you can keep both feet on the ice while perfecting the connecting moves that will improve all of your skating programs.

Duration: Footwork program duration time is 1 minute for all levels.

Maneuver limitations: The focus should be on “footwork,” so your feet should be moving while doing turns and edges, too. You can include other types of skating maneuvers like spirals and arabesques, pivots and spins (less than three revolutions), and half-revolution jumps (such as half flips, waltz jumps, bunny hops, etc.) to help make a creative program.

Also keep in mind, there is no score for technical merit. Props are not permitted in Footwork events.

Competition event groups: Since there is no score for technical maneuvers, the competition director may group skaters together by combining levels and genders.

Judging criteria: Presentation and posture, pattern, correctness of turns and edges, variety of turns and edges, continuity and flow, music interpretation, originality and creativity, duration and general overall. 

High-Level Tests

Congratulations to the following ISI skaters who have recently passed high-level tests:

DANCE 9

Hannah Foust
Ice Chalet (TN)

Dai-Rei Sun
Dr Pepper StarCenter McKinney
at Craig Ranch (TX)

DANCE 8

Snigdha Dhar
Ice Chalet (TN)

FREESTYLE 8

Marissa Beachell
Brett Memorial (AK)

Jennifer Beattie
Nashoba Valley Olympia (MA)

Katherine Brittner
BladeRunners Ice Complex (PA)

Lily Harvison
Sioux Falls Figure Skating Club (SD)

Makenna Leik
Schwan Super Rink/NSC (MN)

Genevieve Silverman
Nashoba Valley Olympia (MA)

Kaylee Tarzon
Homewood Flossmoor (IL)

Jiale Turner
Harry J. McDonald Memorial Center (AK)

Ashlynn York
Harry J. McDonald Memorial Center (AK)

Classified Advertising

PrivateProList.com-the private lesson source!
If you teach private lessons, advertise your business NATIONWIDE with us! If you are searching for a coach in your area, PrivateProList.com is the best tool for you.



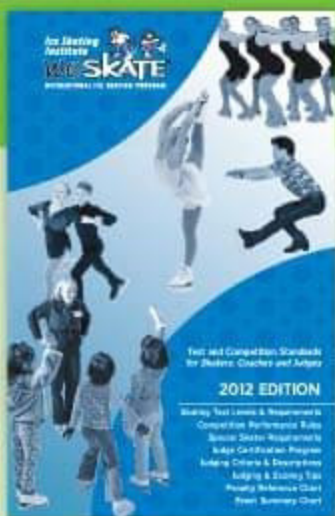
To place classified advertising, call Carol Jackson, advertising sales manager, at (972) 735-8800, fax to (972) 735-8815 or send e-mail to cjackson@skateisi.org. The deadline for the next issue of *Recreational Ice Skating* is July 25.

SkatingSafe, Inc. UltraCrash™ Fall Protection Pads

provide you with the Confidence & Security that you are **LESS** likely to be hurt when wearing our pads. Focus on the important stuff like landing that **JUMP!**



Call (888) 299-2553 or visit www.SkatingSafe.com



Updated and revised for 2012 — a must-have for coaches, skaters and parents!

The *ISI Handbook* is the only comprehensive resource for:

- ISI test level requirements
- weSKATE program information
- Competition events and performance rules
- Judging (including penalty reference chart and quick reference for duration)

Updated and revised to include the 2012 Rule Revisions, plus event descriptions for new national events (Advanced Formation teams, Open Skating teams, Theater Production teams and Open Pair tests & events).

The *ISI Handbook* provides a wealth of information, standards and resources for learning, teaching and judging the ISI Recreational Skating Program.

\$25 each OR special rate of only \$20 each for orders of 10 or more!

skateisi.org/handbook | (972) 735-8800

2012 ISI Scholarship Recipients Announced

The ISI Education Foundation awards annual scholarships to ISI skaters, with recipients announced at the annual ISI Conference in May. This year's honored scholars, who will be profiled in an upcoming issue, are:

Erika Galloway
Downers Grove, Ill.
Downers Grove Ice Arena

Blair Mack
Deerfield, Ill.
Northbrook Sports Center

Erin Sprenger
Jefferson City, Mo.
Washington Park Ice Arena

Jacqueline Sullivan
Yonkers, N.Y.
E.J. Murray Skating Center

Recent Donations

For information on tax-deductible donations as well as memorial or honorary gifts, please go to www.skateisi.org/foundation. Special thanks and appreciation go to the following generous individuals and groups who made pledges and donations during the first quarter of 2012:

5-YEAR PLEDGE: GUARANTOR (\$5,000)
Donald Bartelson
Wonderland of Ice

5-YEAR PLEDGE: SPONSOR (\$1,000-4,999)
Larry & Lorraine Fies
Burt & Judith Sniffen

CONTRIBUTOR (\$100-249)
Madalyn Hair

FRIEND (\$25-99)
Michael Norreel
Amy Wilson

ISI IS COLLEGE-BOUND!



College students don't have to put ice skating on hold! The ISI Collegiate Skating Program gives students the opportunity to maintain or improve their skills, stay fit, be part of a team and compete in ISI events.

ISI member skaters of all skill levels are welcome. There is no minimum or maximum requirement for team size; even a single skater can represent a school. The Collegiate Championship trophy is awarded annually at the ISI Adult Championships.

"Attending practices is good exercise and a great way to take a break from a hectic college schedule and enjoy the ice."

Elisabeth Pitruzzella,
Alpha-Level Collegiate Skater

"The ISI program is a wonderful vehicle for collegiate teams to explore their talent and experience a stress-free atmosphere."

Monica Malcomson,
Platinum-Level Collegiate Skater

Participation in the ISI Collegiate Skating Program offers all of the opportunities, rewards and — most of all — FUN that ISI skaters have come to know and love!

ISI COLLEGIATE SKATERS:

- Continue to participate in and enjoy a sport they love.
- Become part of a group of new friends who share their love of skating.
- Participate in ISI competitions.
- Stay fit and maintain or improve their skating skills.

For more information, go to skateisi.org/collegiate or contact the ISI office at (972) 735-8800.

 **Ice Skating Institute**

Ice Poets

I-C-E S-K-A-T-I-N-G

I is for ice
C is for cooperation with coaches
E is for exhilarating

S is for skating
K is for kids
A is for axels
T is for toe pick
I is for Ina bower
N is for nationals
G is for gold medal

Francesca Ciluffo, 8, FS 5
Great Neck, N.Y.
Great Neck Parkwood Sports Complex



On the Ice

Your first step
on the ice
feels like
you're on top
of the world
and can fall off
at any second.
With one stumble
or misstep,
your three minutes of fame
could end miserably.
All eyes
are on you.
You know everyone
can sense your nerves.
When the music starts
and echoes
through the rink,
all you feel
is your routine
escaping your mind.

When you begin
your program,
you don't have time
to doubt yourself.
You go,
you push,
you jump,
pull yourself in
and land perfectly.
You fly through footwork
and approach
another element.
You spin until you
can't see anything,
and you hold your
composure when you land.
Finishing your routine
is a huge relief,
and you are quick
to exit the ice.

Even though you can
barely breathe,
the practice
and nerves
are worth it
when you hear the
crowd applaud.
Once you get
off the ice,
hugs, kisses, and compliments
are quick to follow.
When you hear
your event called,
all your nerves
come back again.
You hear third place,
not you.
You hear second place,
not you.
You hear
first place announced
with your name
quick to follow,
and all the
applause starts again.
In your sigh of relief,
you remember,
you have
practice tomorrow,
and another performance
soon to follow.

**Sydney McGraw,
14, FS 6**
University of
Illinois Ice Arena
Forsythe, Ill.



I Am...

I am a girl filled with spirit as I take the ice,
I wonder how this will go,
I hear the crowd cheering,
I see my friends walking through the door,
I want to get this over with!
I am a girl filled with spirit as I take the ice.

I pretend that I will win,
I feel as cold as the ice underneath my blades,
I touch my sparkly dress,
I worry that I will fall,
I cry because I have,
I am a girl filled with spirit as I take the ice.

I understand if I lose,
I say I got first place!
I dream of being in the Olympics,
I try to stop shaking,
I hope my coach is happy,
I am a girl filled with spirit as I take the ice.



Sarah Frazier, 12, FS 4
K Lynn Skating School
Montgomery, Ala.

Artistic Program

Graceful as a swan
Yet powerful as a lion:
The figure skater.

The audience falls still
All eyes fixed upon one spot:
A young ice skater.

Music fills the air
the skater begins to move.
A story blossoms.

Lost somewhere alone
trying to find her way home
when she is attacked.

Fleeing from the beast,
running as fast as she dares;
then she trips and falls.

Looks at the creature
fear clawing under her skin
staring at her death.

Then the music ends.
She stands up and smiles big,
curtsies joyfully.

That's a skater's goal,
to create a universe
around her program.

Later on she grins
Showing off her greatest win:
A gold medal — first.



Wini Kibre, 12, FS 5
Redwood City, Calif.
Nazareth Ice Oasis

Express yourself! Send your ice skating creation to editor@skateisi.org. In addition to poems, we welcome essays, articles and artwork — wherever your imagination takes you!

Ice Skating
Institute

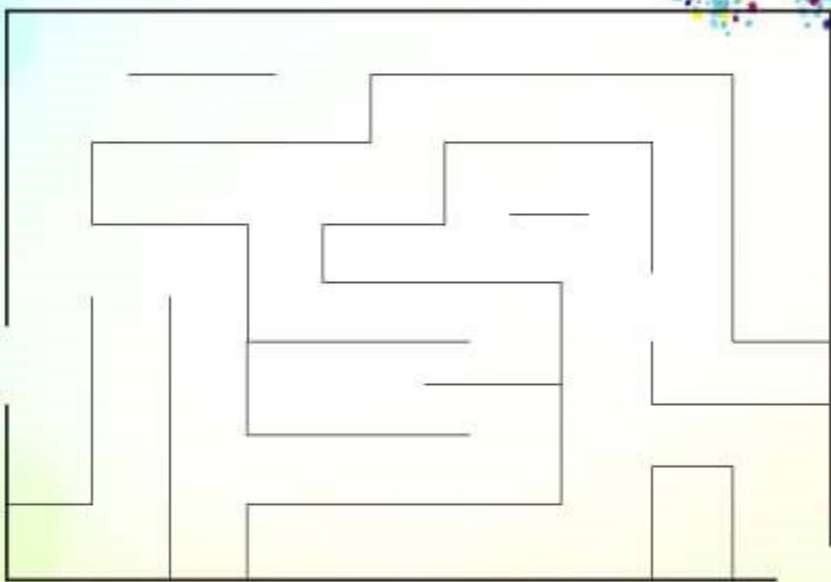
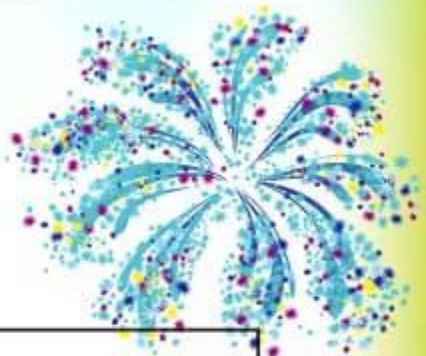


weSKATE[®]

RECREATIONAL ICE SKATING PROGRAM

**ADVENTURES
& ACTIVITIES**

Help our skater through the
maze so he can get to his 4th
of July celebration on time!



**WHAT'S THE BEST WAY
TO STAY COOL THIS SUMMER?**

Unscramble the letters below to find out.

T I N O C H E E

_____!



ARE YOU EARNING YOUR BADGES?



As an ISI member, you are eligible to earn badges to mark the different levels of your accomplishments. You may also compete at the last level earned.

See if you know some of the requirements of the first five badges, by drawing a line from the skill listed to the badge test that it's on.



- a. Bunny Hop
- b. Forward Crossovers
- c. One Foot Glide
- d. Hockey Stop
- e. Backward Crossovers
- f. Forward Swizzles
- g. T-Stop
- h. Outside 3-Turn
- i. Lunge
- j. Two Foot Glide
- k. Inside 3-Turn
- l. Forward Stroking
- m. Mohawk Combinations

Find the answers at skateisi.org/testinglevels.

competitions

june

- 28-July 1 Natick MA
FMC William Chase Arena
22nd Annual District 1 Championships
30-July 1 Paramount CA
Paramount Iceland
ISI Open Competition
30-July 1 Las Vegas NV
Las Vegas Ice Center
Red, White & Blue ISI Open Competition

july

- 7-8 Evanston IL
Robert Crown Center
July Open
13-15 South St. Paul MN
Wakota Civic Arena
Summer Breeze Competition
14 Wilmette IL
Centennial Ice Rinks-Wilmette
Mid-Summer Classic
14-15 Eagle River AK
Harry J. McDonald Memorial Center
Once Upon a Time-District 16 Summer
Competition
21-22 Westminster CA
The Rinks- Westminster Ice
2nd Annual Westminster Ice ISI Open
28 Gurnee IL
Rink Side Family Entertainment Center
The Summer Chiller



- 23-28 Dallas TX
Dr Pepper Arena-Frisco
Dr Pepper StarCenter
McKinney at Craig Ranch
ISI World Recreational
Team Championships

august

- 9-12 San Diego CA
Ice Town-La Jolla
Skate by the Sea
11-12 Oxnard CA
Channel Island Ice Center
Summer Skatefest
14-16 Honolulu HI
Ice Palace Hawaii
ISI Hawaiian Open

september

- 14-16 Arlington TX
ICE at The Parks
9th Annual Open Competition
15-16 Valencia CA
Ice Station Valencia
7th Annual Autumn Classic
21-23 Gatlinburg TN
Ober Gatlinburg Ice
Ober Gatlinburg ISI Invitational

october



- 5-7 Las Vegas NV
Las Vegas Ice Center
ISI Adult
Championships

- 20-21 Irmo SC
Plex Indoor Sports & Ice
Palmetto Skate Club
Palmetto Classic

november



- 30-Dec. 2 Danbury CT
Danbury Ice Arena
ISI Holiday Challenge

2013

february



- 8-10 Oxford OH
Goggin Ice Center-
Miami University
ISI Winter Classic

april



- 12-14 Blaine MN
Schwan Super Rink
ISI Synchronized
Championships

shows & exhibitions

july

- 14 Roseville CA
Skatetown
Adventures at Sea
22 Fort Myers FL
Fort Myers Skatium
Skating Through the Decades

august

- 4 Taunton MA
FMC Alexio Arena
Summer Show Off Exhibition
6 Evanston IL
Robert Crown Center
End of Summer Exhibition

november

- 24-Dec. 16 Arlington TX
ICE at The Parks
Holiday at The Parks

december

- 4-8 Knoxville TN
Ice Chalet
Nutcracker On Ice
5-6 Honolulu HI
Ice Palace Hawaii
Winter Show
9 Escondido CA
Iceoplex Escondido
Viva Las Vegas Holiday Show

Adult Skaters Love to Live It Up in Vegas!

ISI Adult Championships
October 5-7
Las Vegas Ice Center
Las Vegas

Entry & Test Deadline: August 10



"Through my participation in ISI national events, including Adult Championships, I have enjoyed excitement, challenge and new friendships. Each competition has brought its own special meaning into my life. Just being there is an explosion of fun! The events are geared to all levels, so each competitor has an equal opportunity to express, improve and be a champion. There is so much support and encouragement among all the competitors toward each other to be all you can be. It's like a big family caring for each other — you're never alone when skating in an ISI competition."

Cheryl Graffi
Pasadena, California

skateisi.org/adultchamps



ISI NATIONAL COMPETITIONS



July 23-28

Dr Pepper Arena-Frisco
Dr Pepper StarCenter
McKinney at Craig Ranch

Entry & Test
Deadline:
May 1, 2012



Oct. 5-7

Las Vegas Ice Center
Las Vegas

Entry & Test
Deadline:
Aug. 10, 2012



Nov. 30-Dec. 2

Danbury Ice Arena
Danbury, CT

Entry & Test
Deadline:
Oct. 1, 2012



Feb. 8-10

Goggin Ice Center
Oxford, OH

Entry & Test
Deadline:
Dec. 1, 2012



Apr. 12-14

Schwan Super Rink
Blaine, MN

Entry Deadline:
Feb. 1, 2013



July 22-27

The Rinks - Anaheim ICE
Anaheim, CA

Entry & Test
Deadline:
May 1, 2013